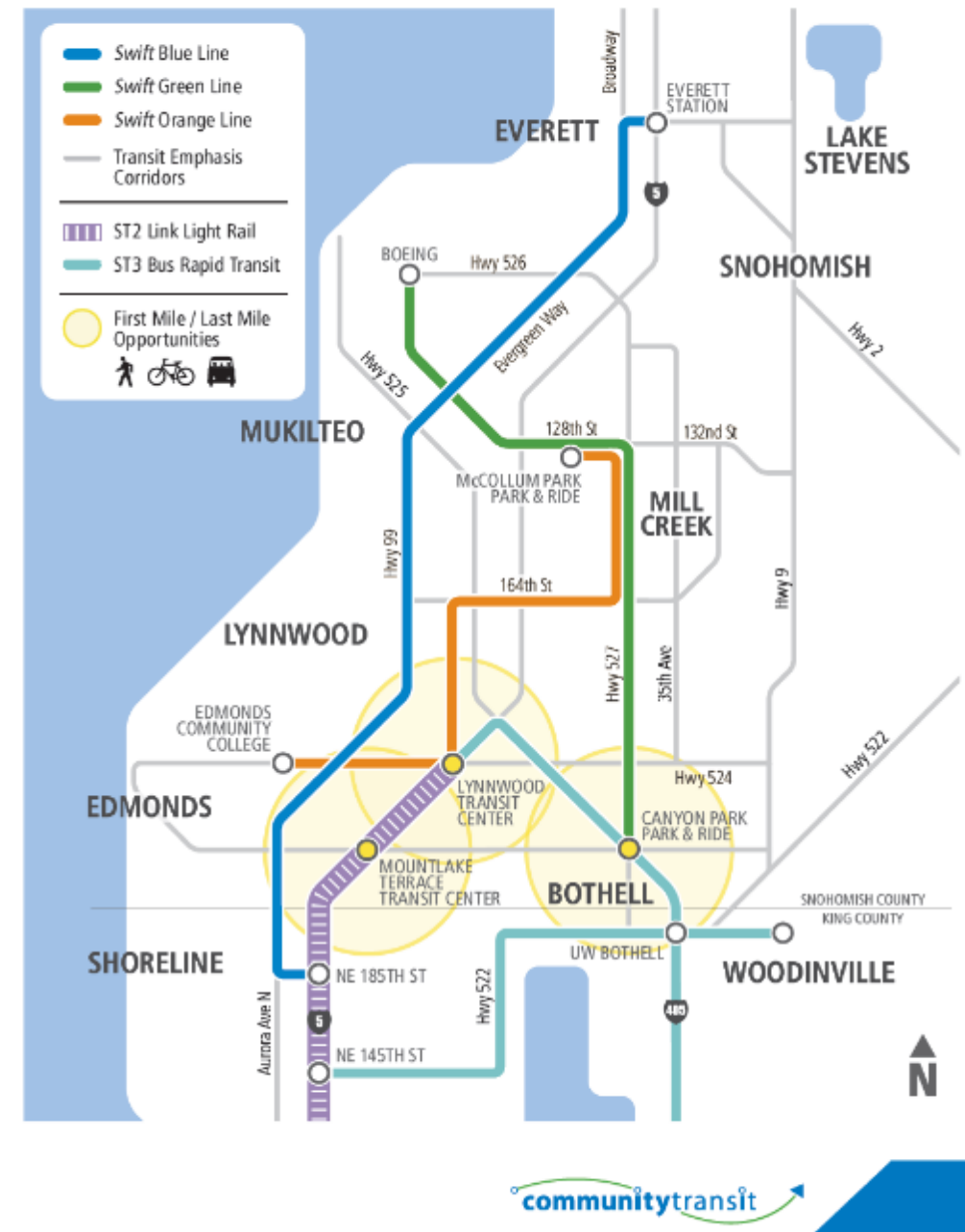


**2024**

Our history is not  
our future...

## Integrated Future Network 2024

Southwest Snohomish County



# Sound Transit System Plan

## System Plan Map



Explore the interactive map  
and view the full project list at:  
[SOUNDTRANSIT3.ORG](https://SOUNDTRANSIT3.ORG)

# Lynnwood Link

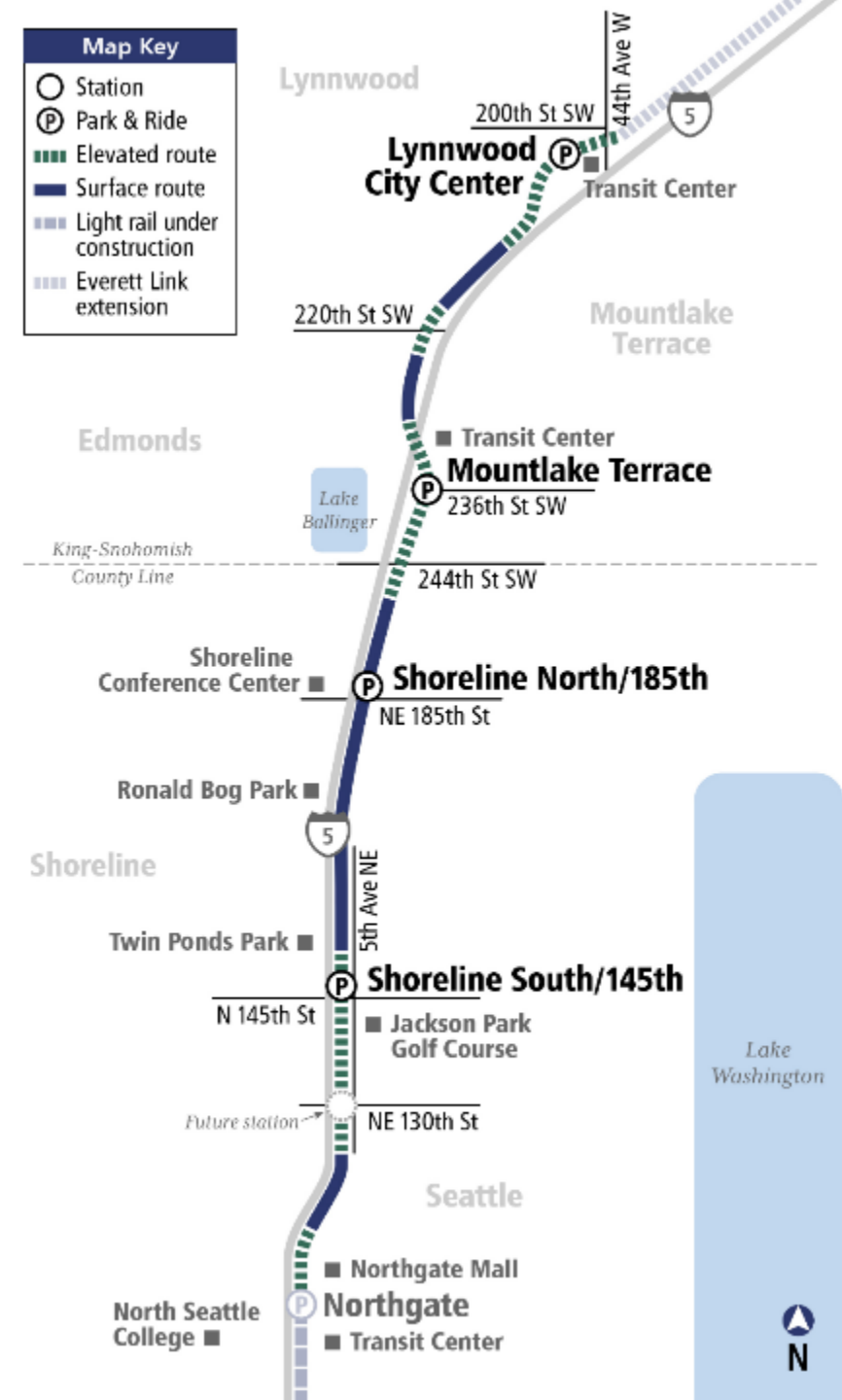
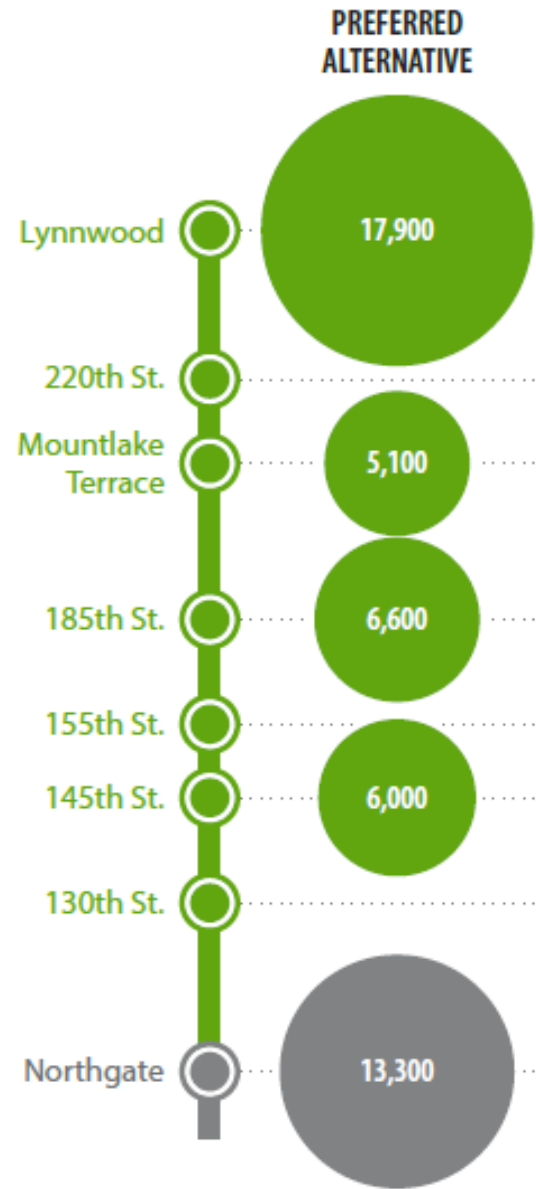
Daily boardings by station:

Today:

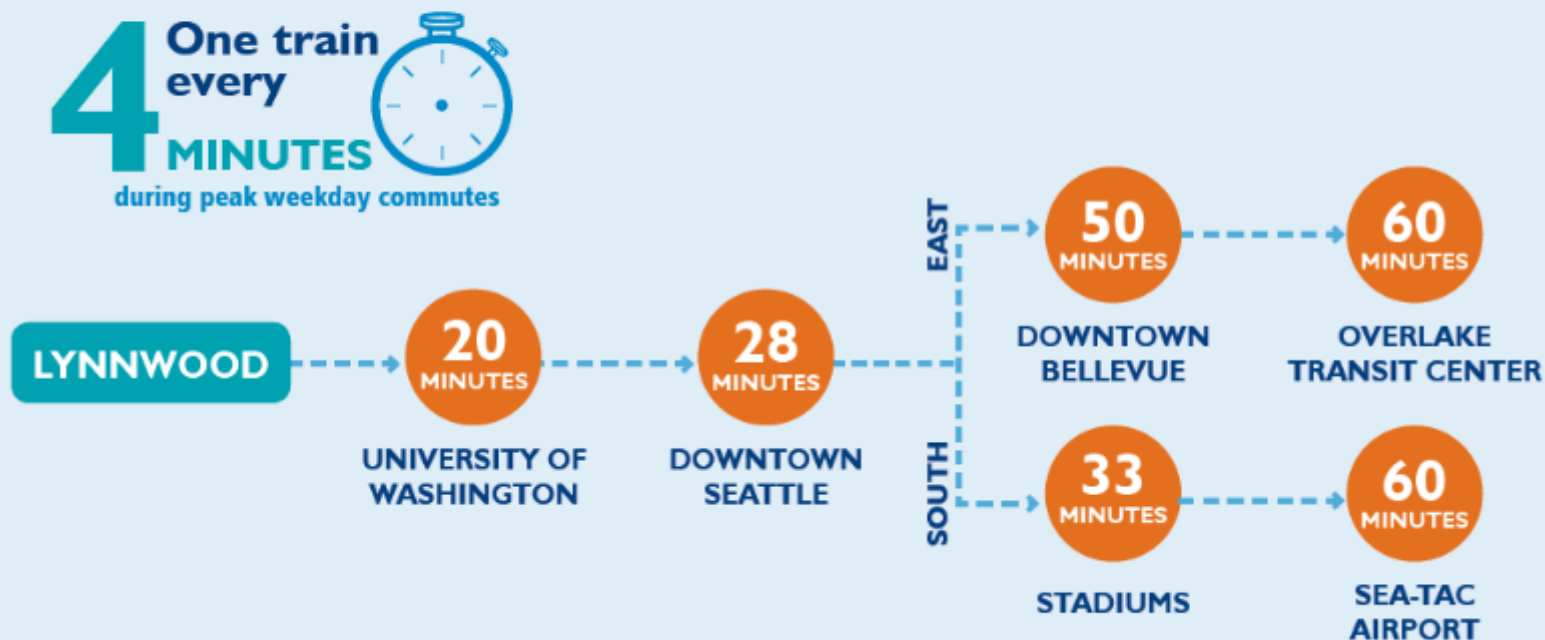
LTC+MLT = 6,200/day

2024-2035:

LTC+MLT = 23,000/day



# How long will my trip from Lynnwood take?



**EACH LINK CAR  
CAN HOLD...**



4 bicycles



4 wheelchairs



200 riders



Multiple suitcases



# Transit Experience on I-5 Today:

- Lynnwood to Downtown Seattle
  - Scheduled at 29 min to 52 min, depending on time of day
  - Actual travel time is 24 min to 73 min
- Downtown Seattle to Lynnwood
  - Scheduled at 30 min to 45 min, depending on time of day
  - Actual travel time is 22 min to 86 min
- Link will be 28 min, every day, every time



# Lynnwood Link

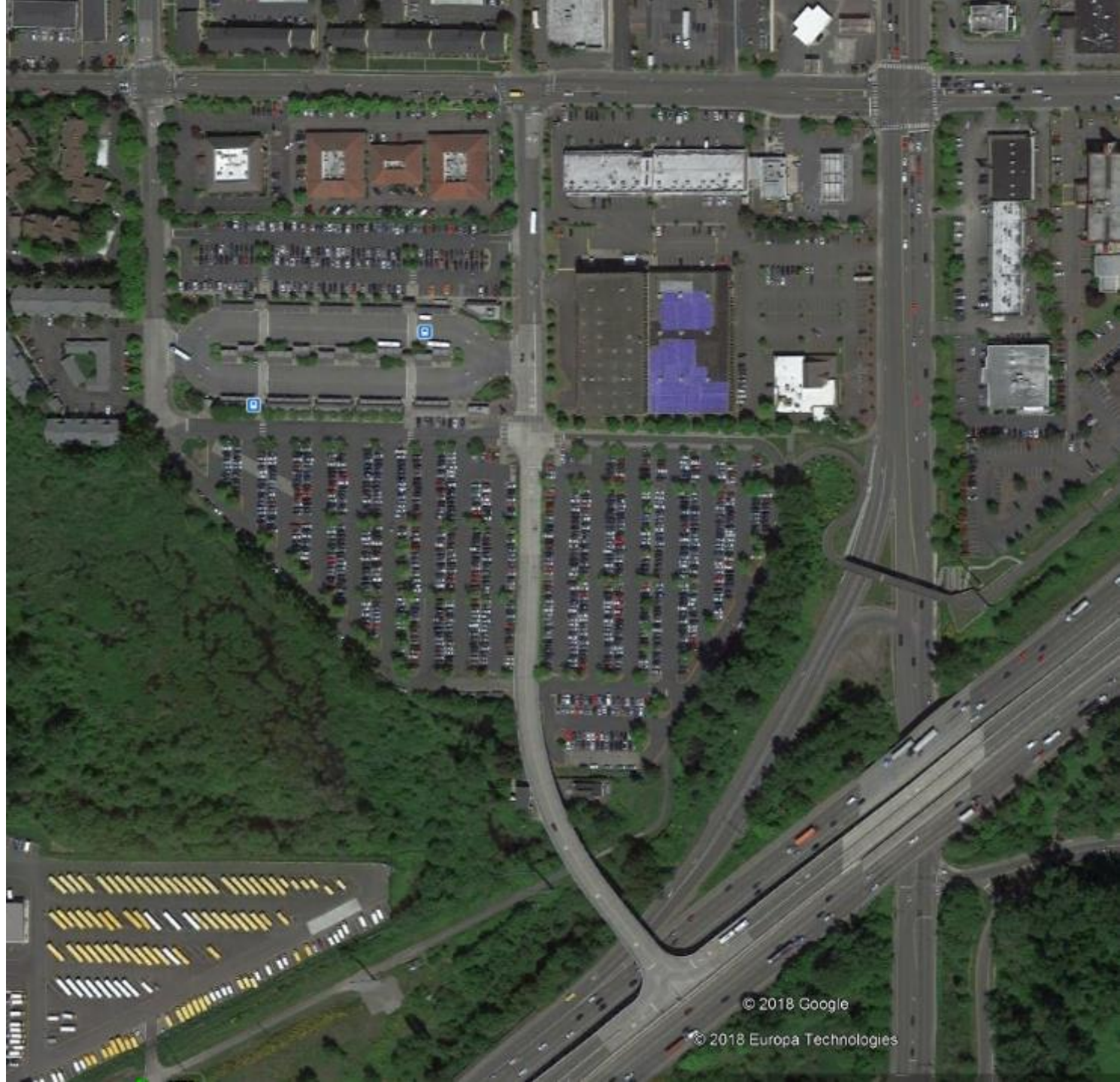
## Project milestones



*Subject to change*



# Lynnwood Transit Center







Bus arrival/departure every 35 seconds







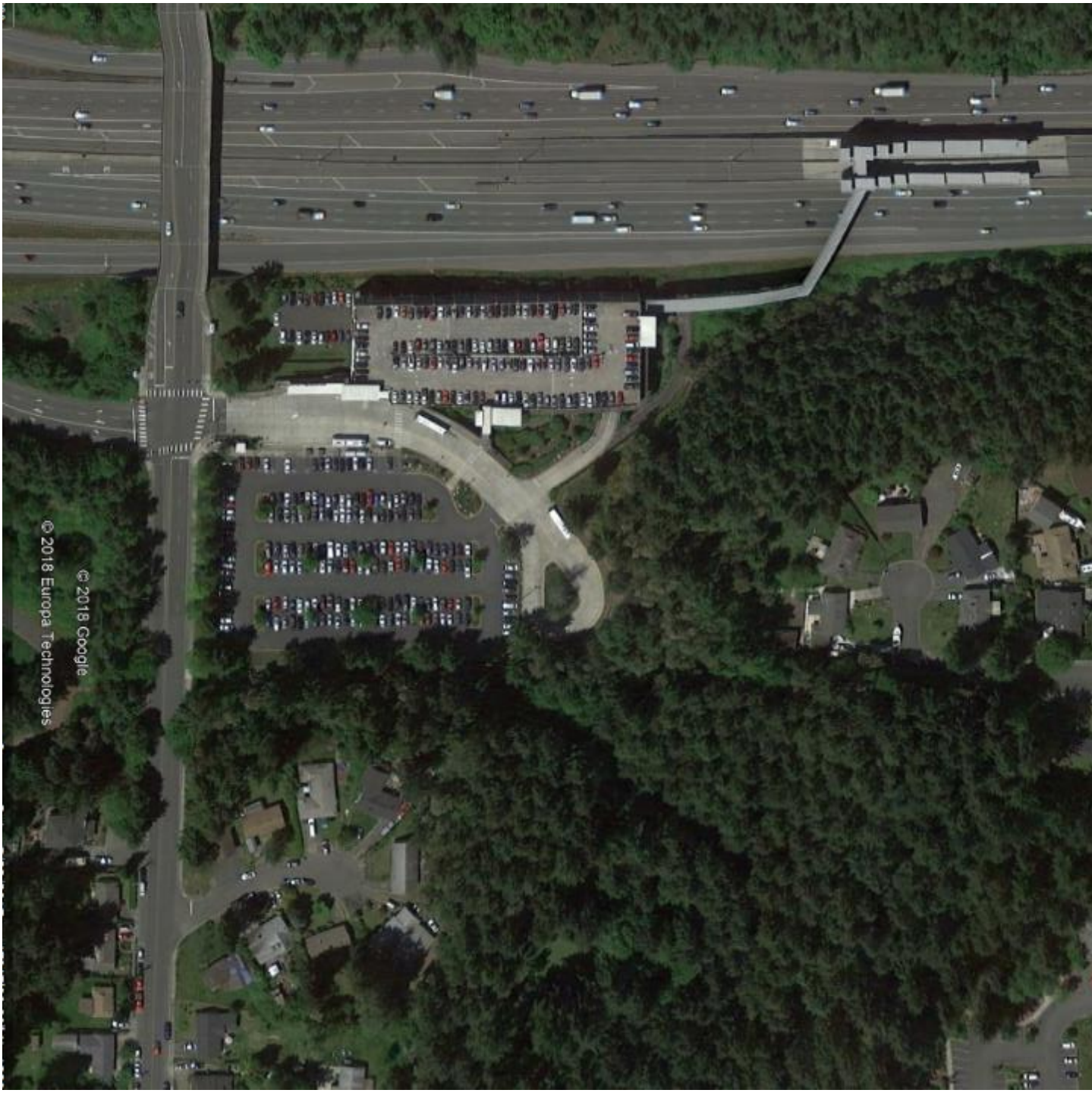






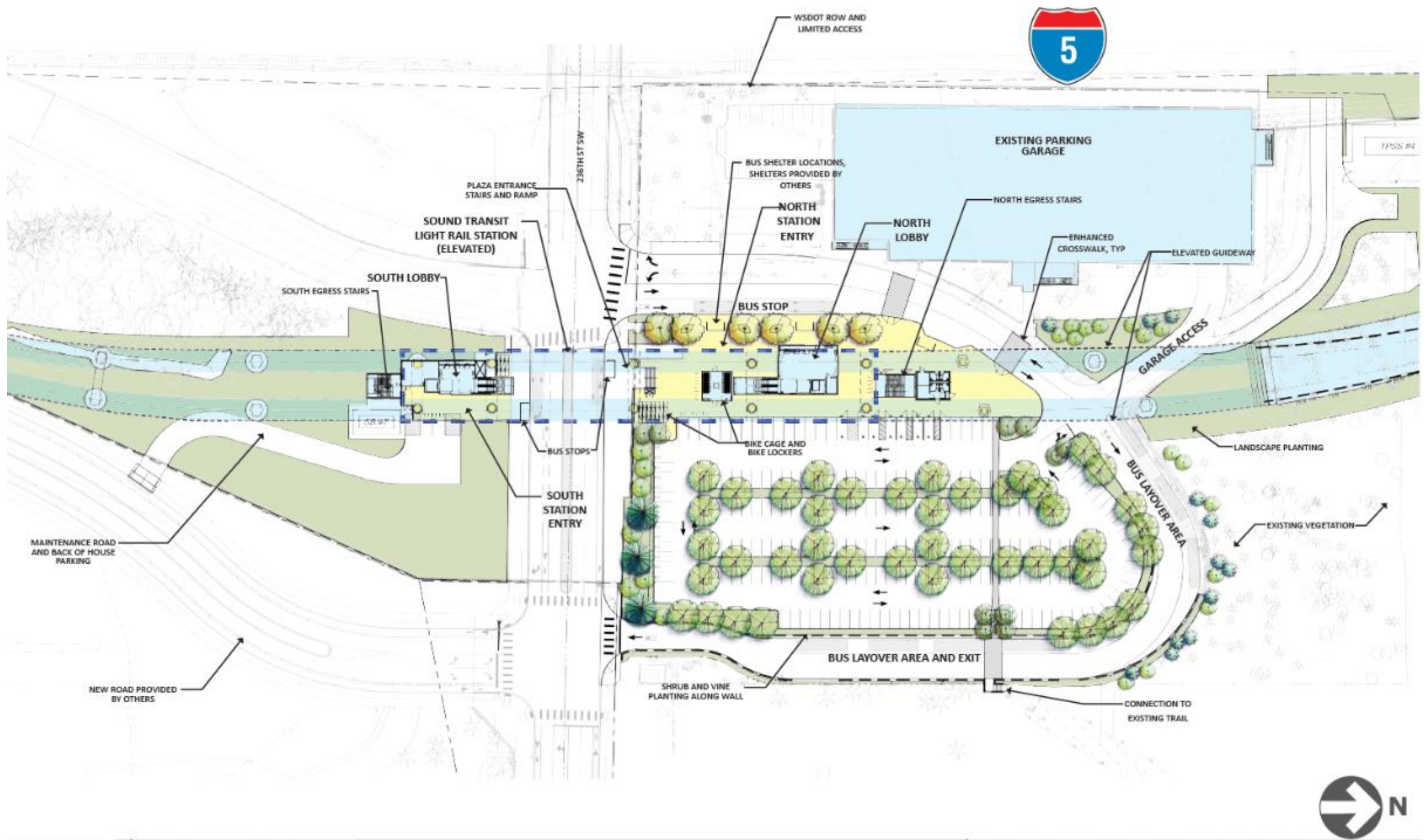


# Mountlake Terrace Transit Center



© 2018 Google  
© 2018 Europa Technologies







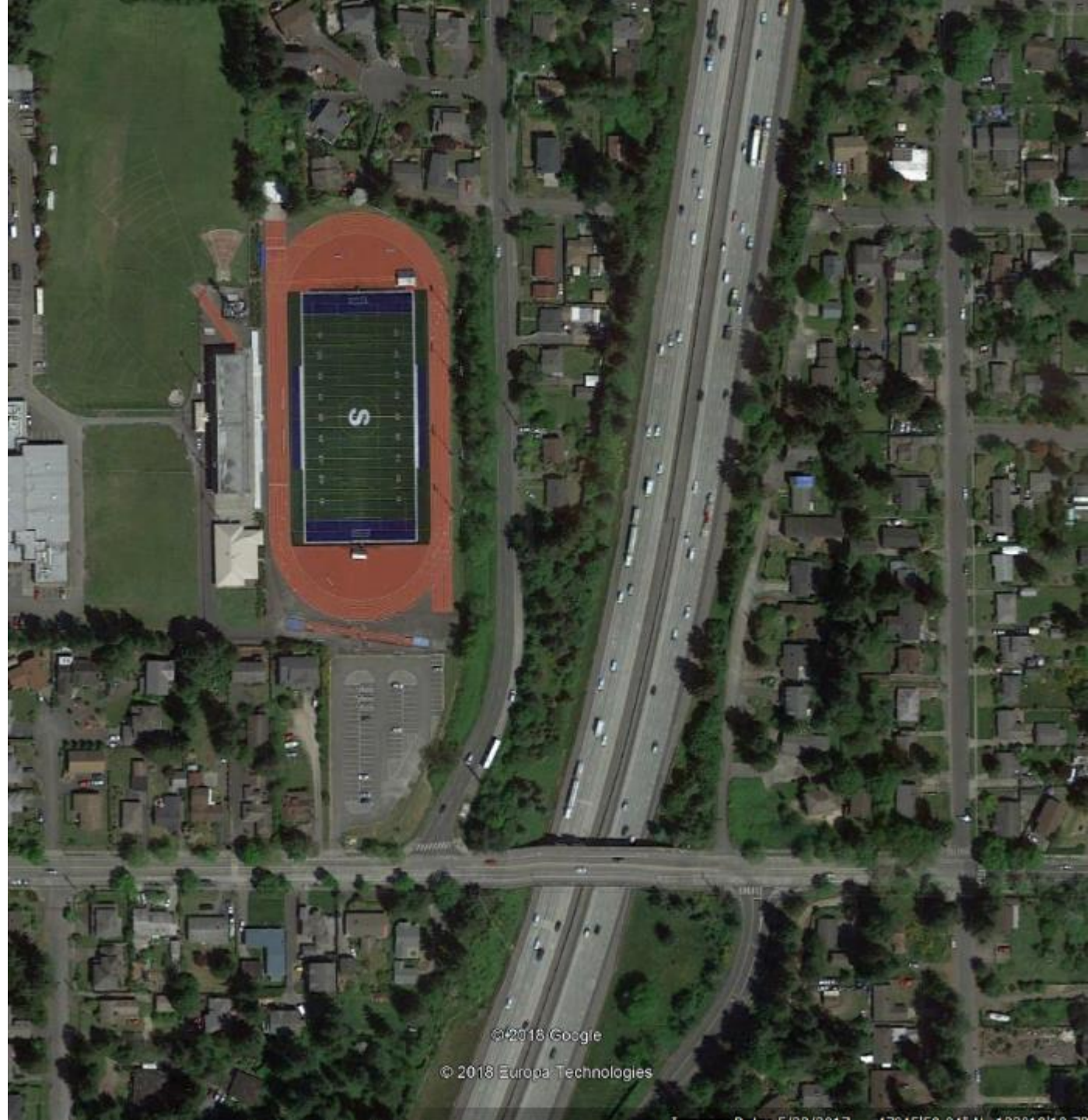








# Shoreline North 185<sup>th</sup> Station











# I-405 BRT







527

Pedestrian bridge

Canyon Park  
park and ride

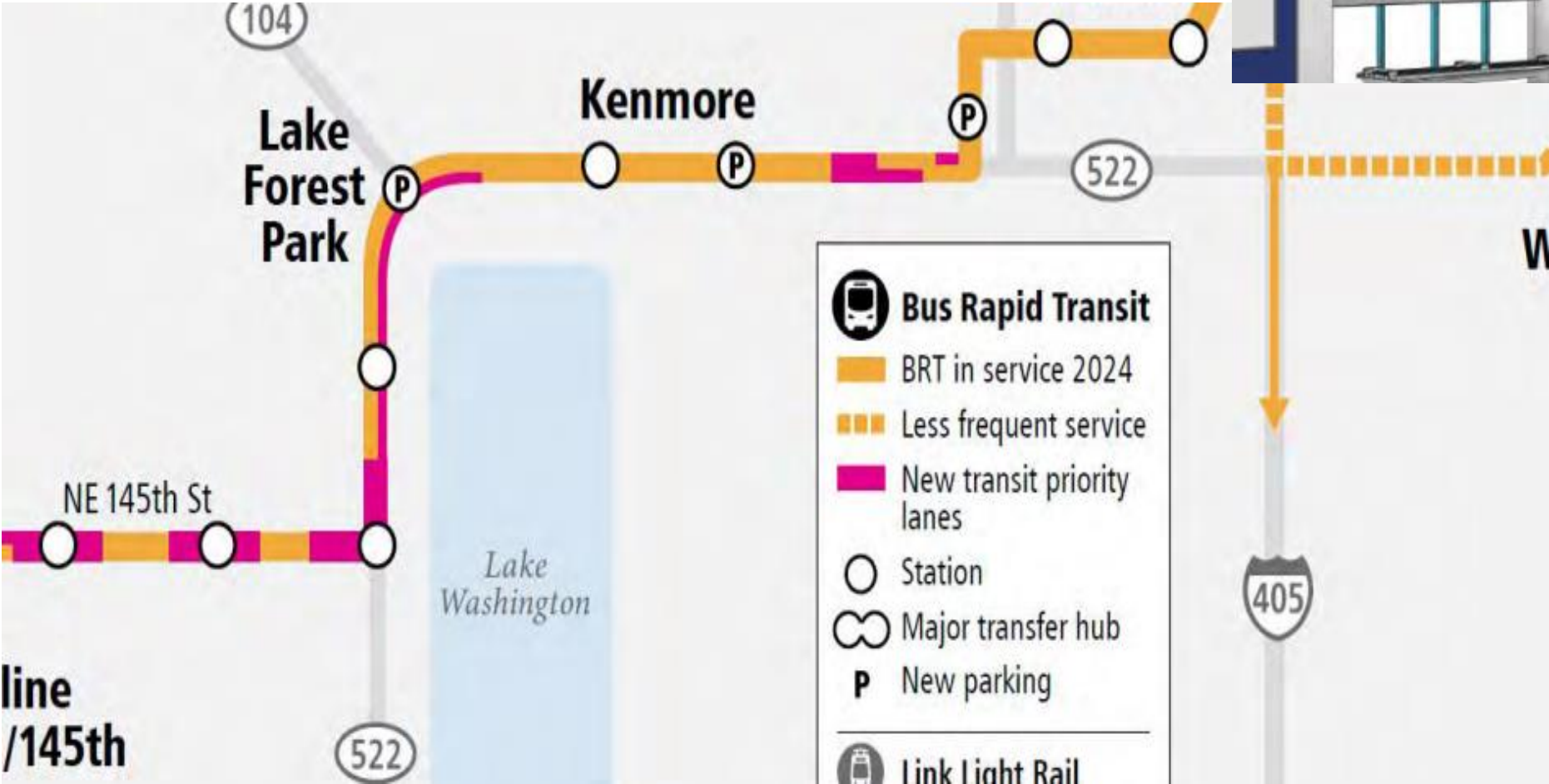
New center direct access  
ramp to I-405 express toll  
lanes

17th Avenue SE

405



# SR 522 BRT



# Redesigned Commuter Routes



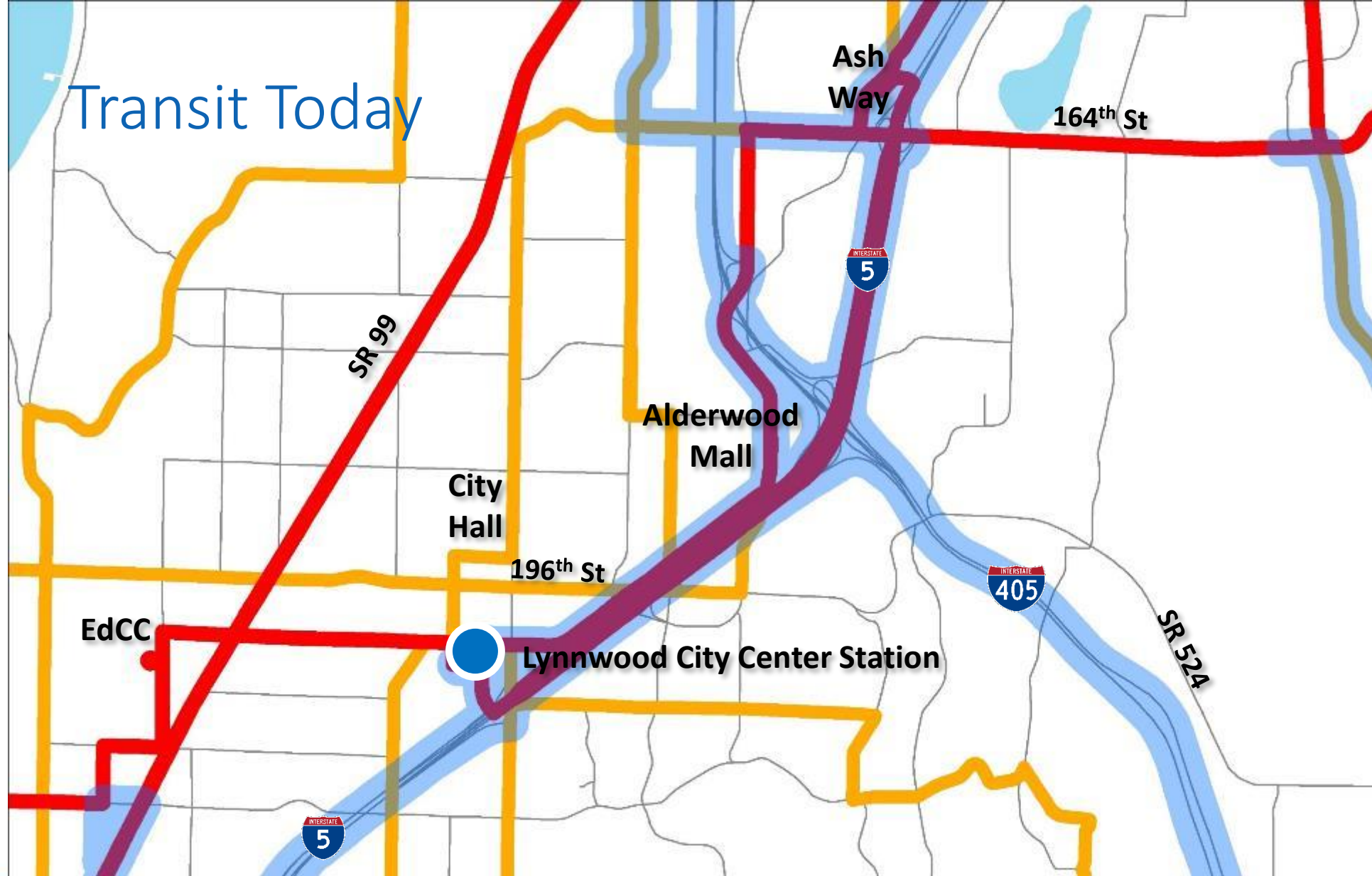


# Service Concepts

- Access to Link
- Connect activity centers
- North-South
- More frequency
- More span
- New routes

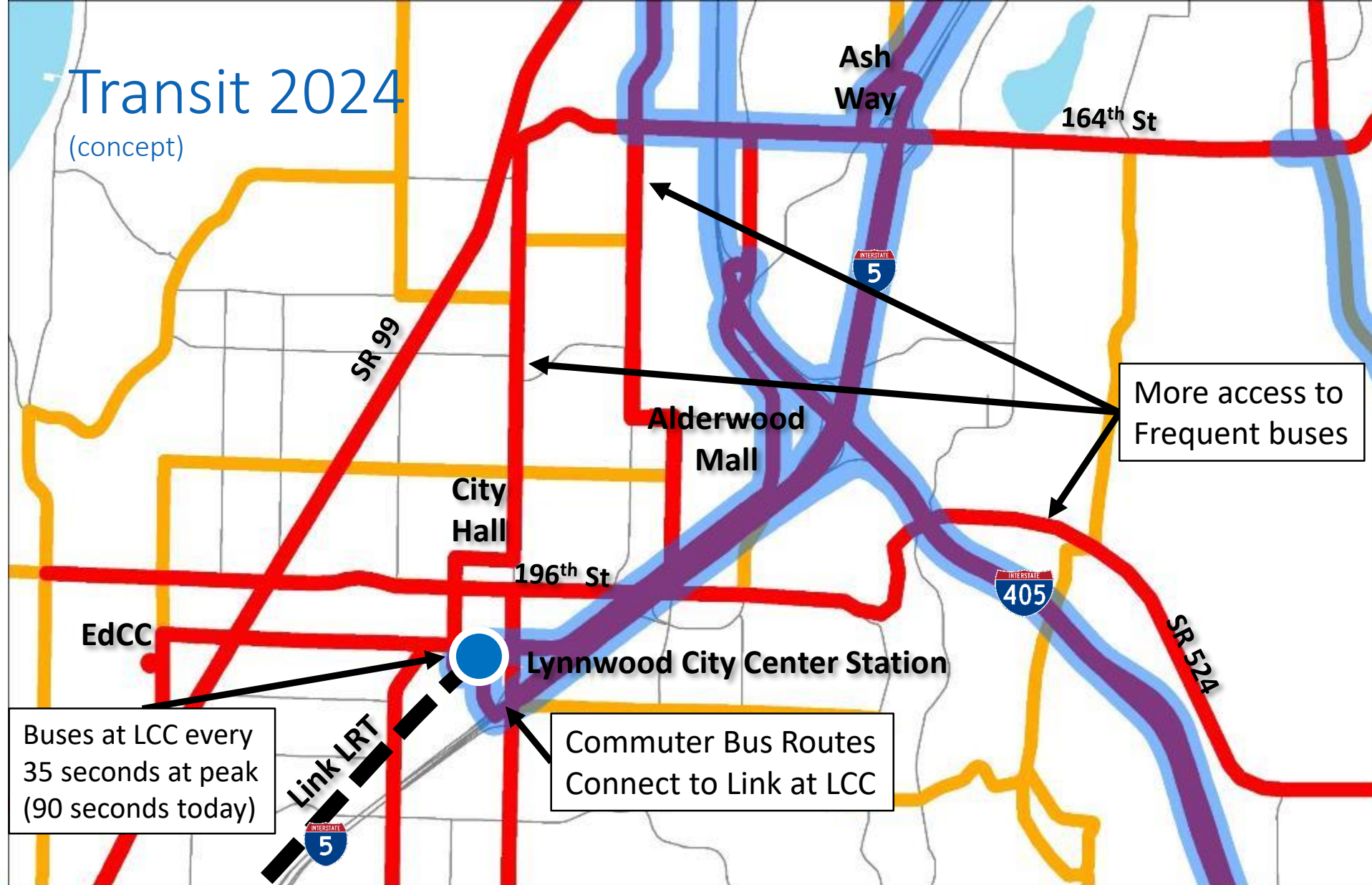


# Transit Today



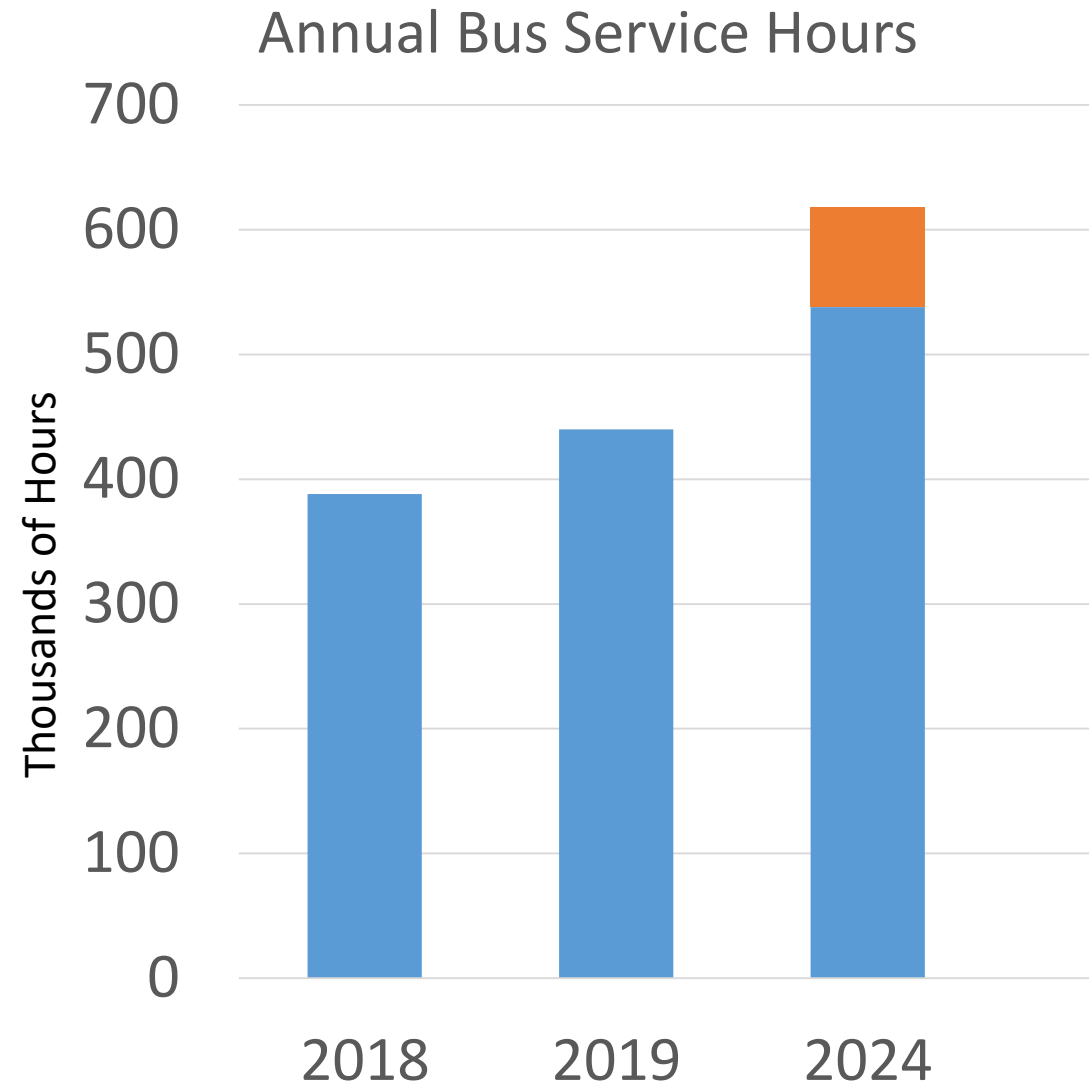
# Transit 2024

(concept)



# Bus Service Levels:

- Re-Investment of Inter-County/I-5



# Alternative Services



# Ridesharing Services



# Carshare & Bikeshare





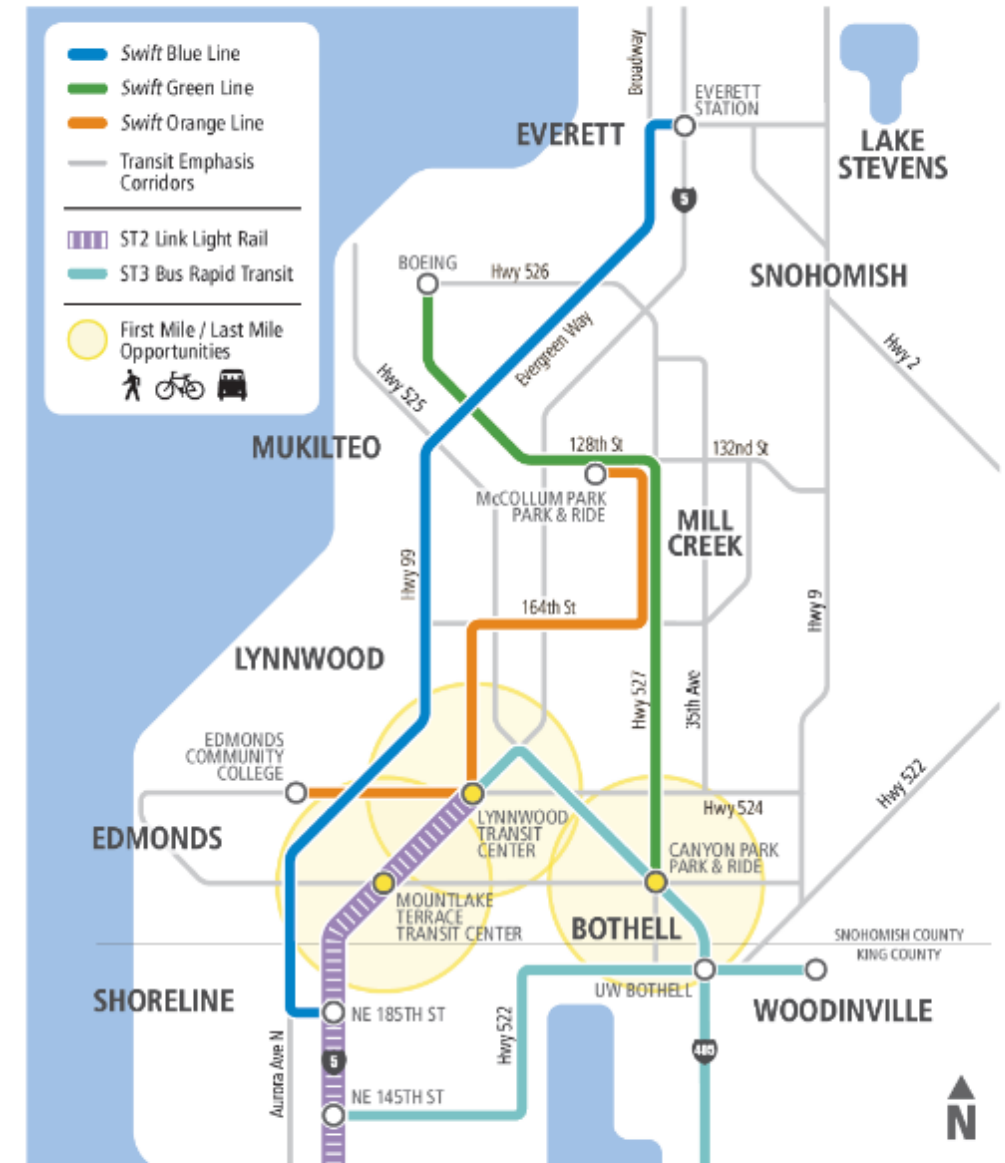
# Van Programs & On-Demand Connections



# 2024 System:

- All-Day Frequent Network:
  - Swift
  - Frequent Arterial Routes (every 15 min.)
- Express Network:
  - Employment Centers
  - Regional Transit Hubs
- Local Routes
- First/Last Mile Alternatives
- Vanpool

## Integrated Future Network 2024 Southwest Snohomish County

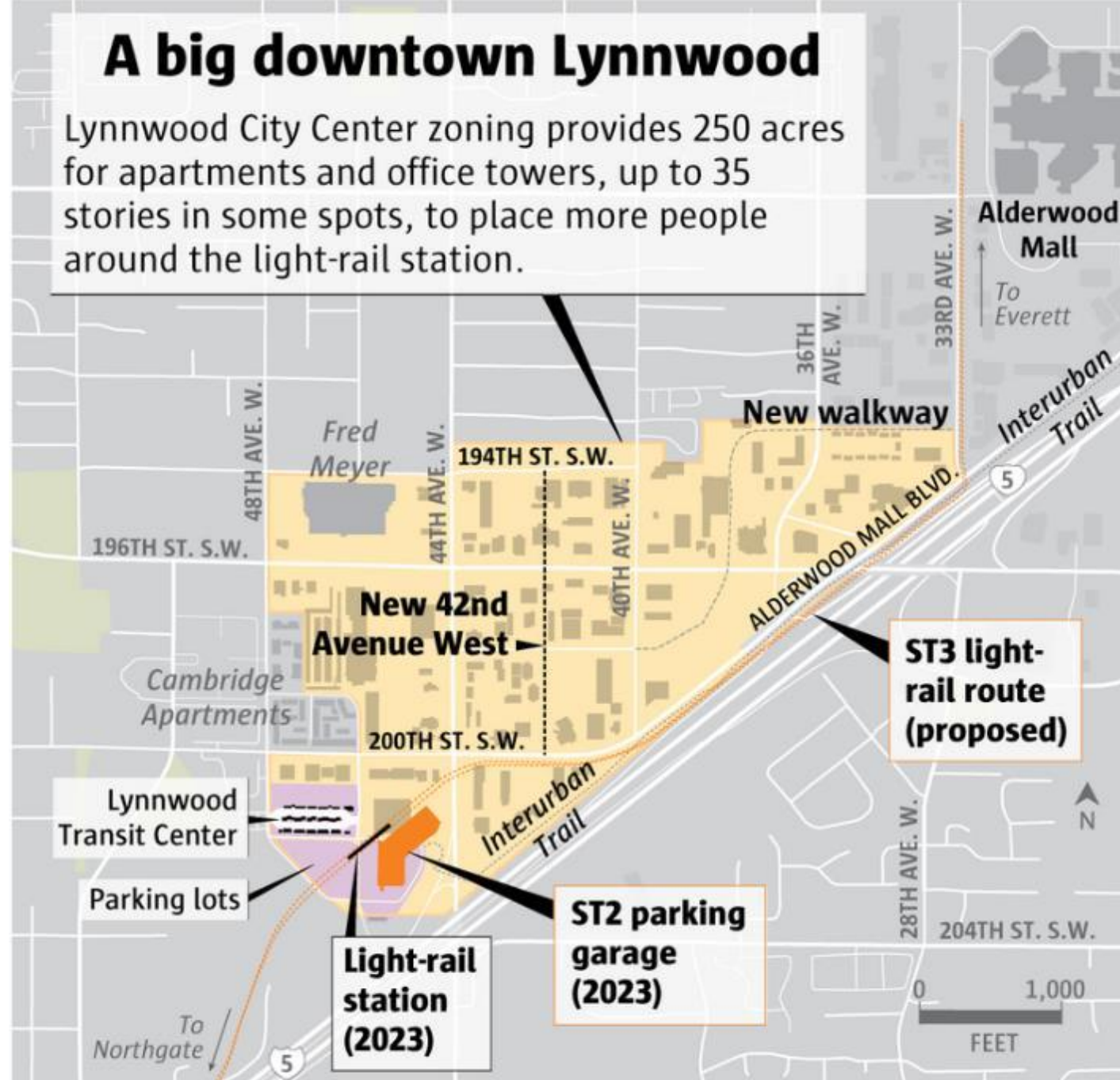




# Major Developments/Projects

# A big downtown Lynnwood

Lynnwood City Center zoning provides 250 acres for apartments and office towers, up to 35 stories in some spots, to place more people around the light-rail station.



Sources: Esri, City of Lynnwood

MARK NOWLIN / THE SEATTLE TIMES





# Alderwood Mixed Use Building



Conceptual drawing, subject to change.

- Proposed 18-story mixed-use development
- Located across from Alderwood Mall on Alderwood Mall Pkwy
- 346 multi-family units
- 3,465 square ft of commercial retail space



- Mall Project – on former Sears site
- 2 6-story multi family apartment buildings
- 328 residential units
- Ground Floor retail (Dicks Sporting Goods)







SITE



# Build-out of Lynnwood Place:

- Next to Costco:
- New Home Depot
  - 108,000 sq ft of retail
  - 28,000 sq ft garden center
- And....





- 500 unit Apartment complex
- 5 story with underground parking
- Also includes 10,000 sq ft of office space
- 12,000 sq ft of retail





# Former Edmonds School District bus property

- 9.17 acres
- 240 new Apartment units





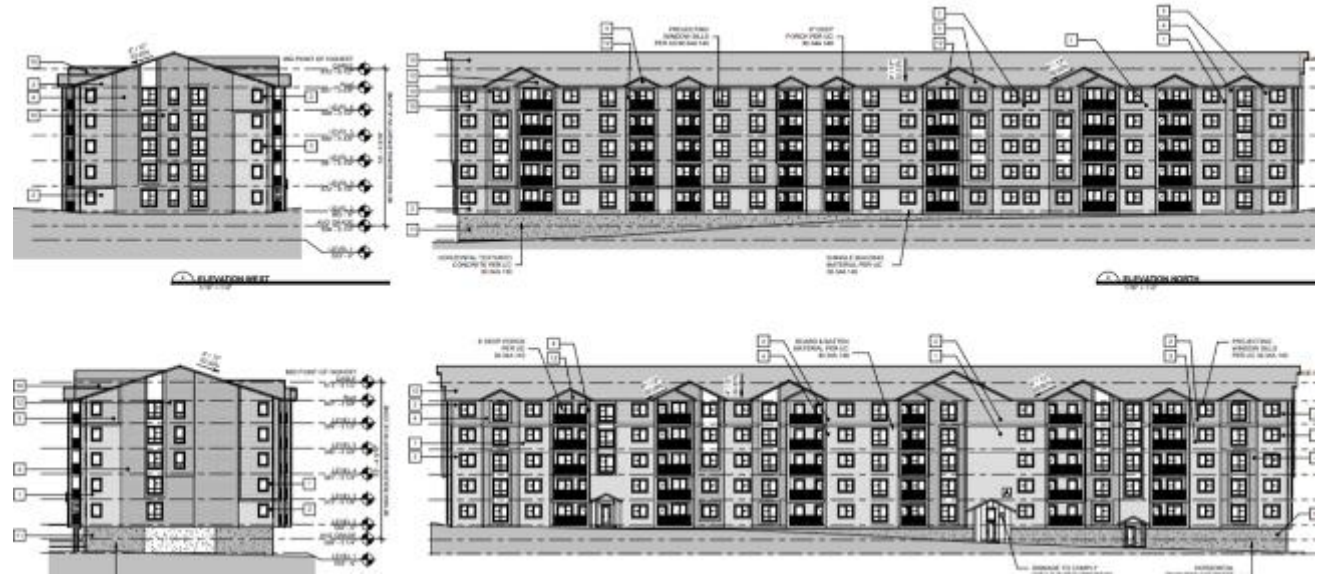
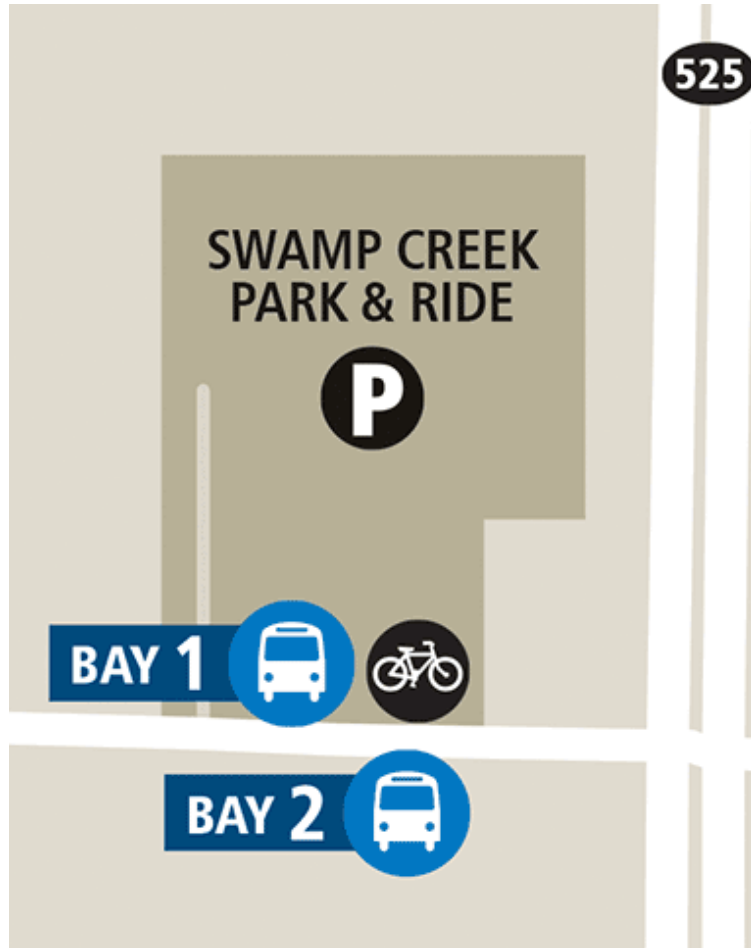
# Mountlake Terrace



- 600 residential units
- +90,000 square ft of commercial space
- Phase 1 is under construction and opens in 2021



# Swamp Creek



To the north: 295 units

To the east:  
435 units



# Paine Field: Opened March 4, 2019



24 flights per day to 9  
Destinations along the  
West Coast



# Mukilteo Multimodal Terminal: 2020





# Metro Everett Plan



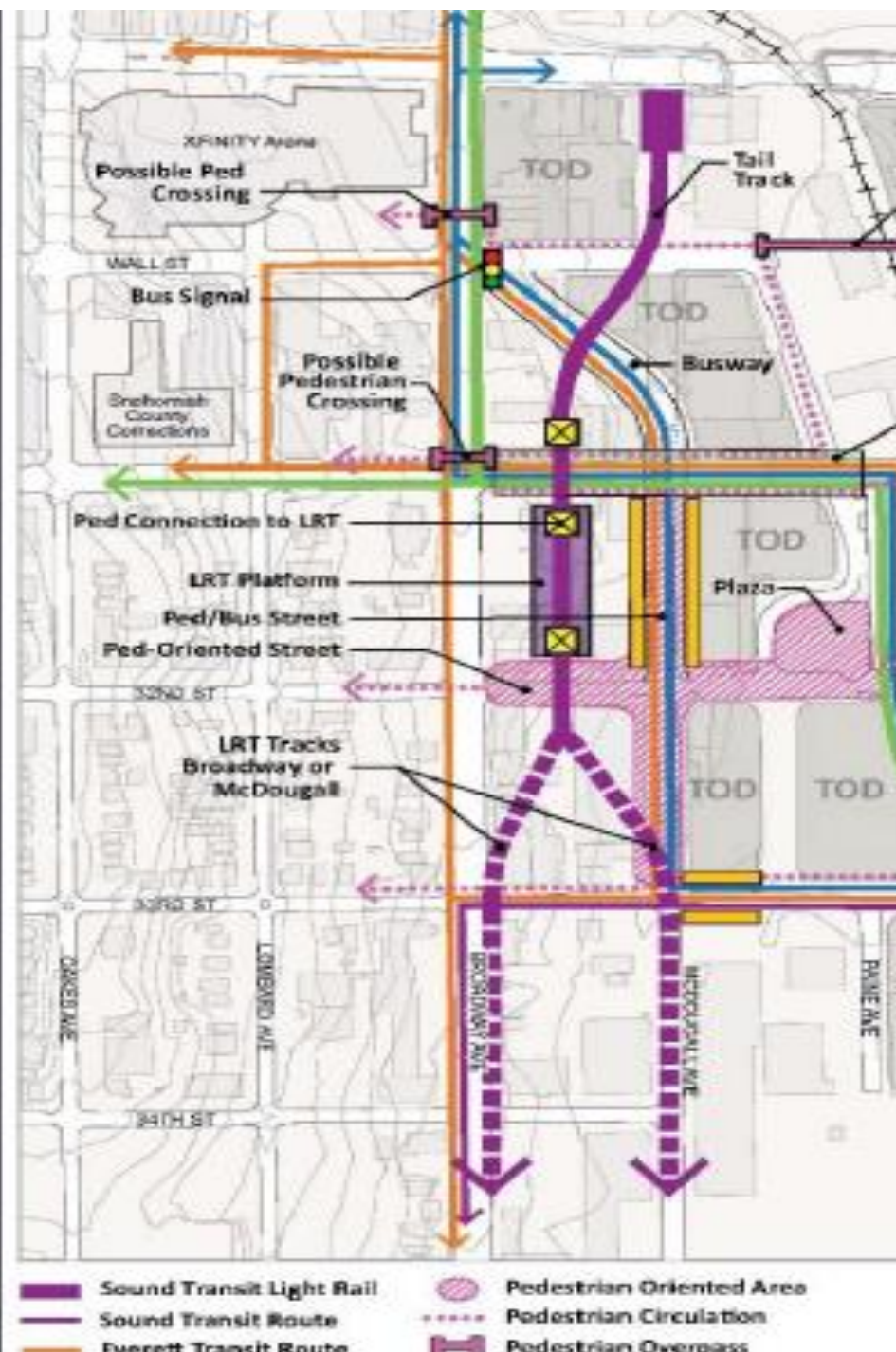


and city transportation policies provide a transportation systems in Metro Everett. Plans and actions focus on transportation to Everett.

Light rail in the city, connecting Everett to the greater Puget Sound area, will be a priority. The prospective location of the light rail also connect the western and eastern Everett if centrally located. Everett will work during the planning and design process to coordinate investments and implementation.

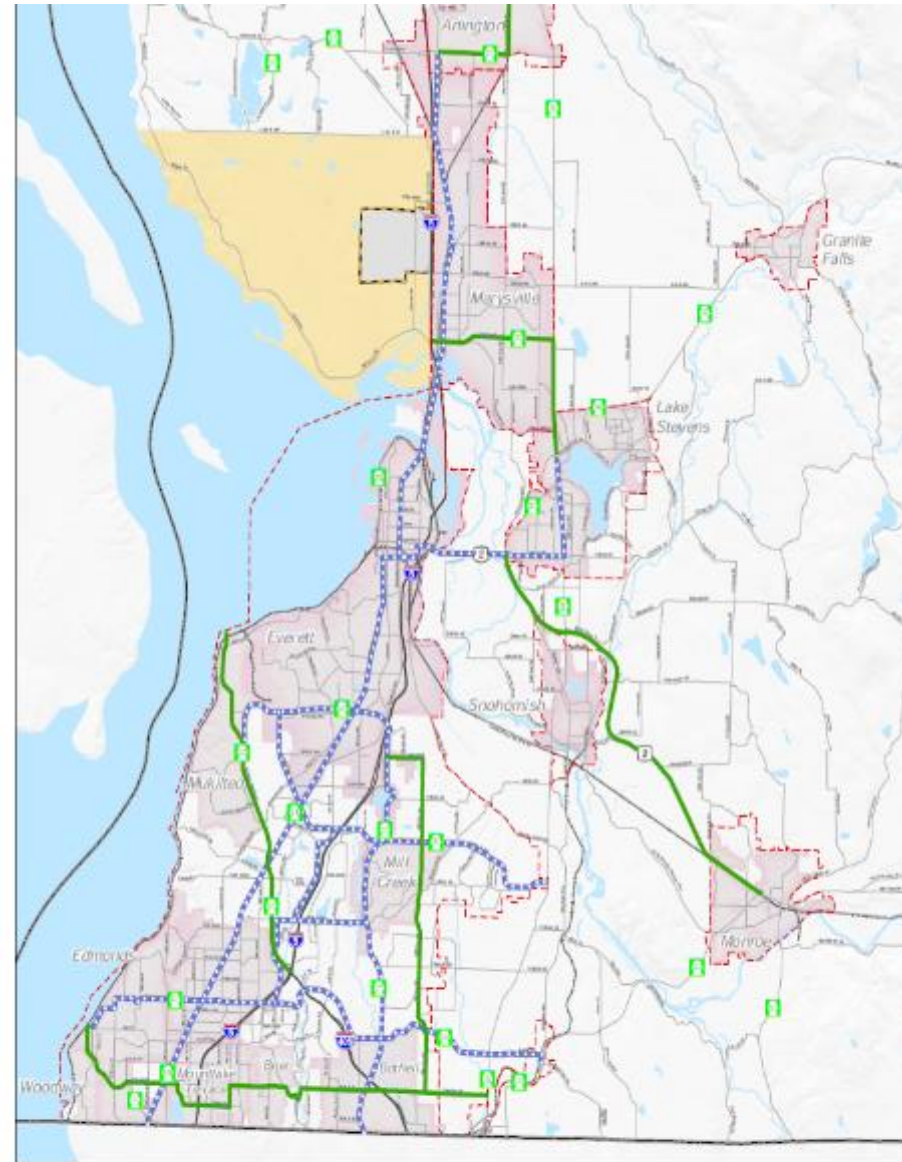
The light rail station to best serve both Everett Station areas. This station should be convenient and physically accessible to Everett Station. A preliminary location is near Broadway and Pacific Avenue.

The Pacific Avenue bridge from the BNSF to Broadway. This will improve the connections to downtown, serve transit better as a route on McDougall, and serve a new platform.



# Snohomish County Comp Plan

- Transit Emphasis Corridors



**SNOHOMISH  
COUNTY  
2015 GMA  
COMPREHENSIVE  
PLAN UPDATE**

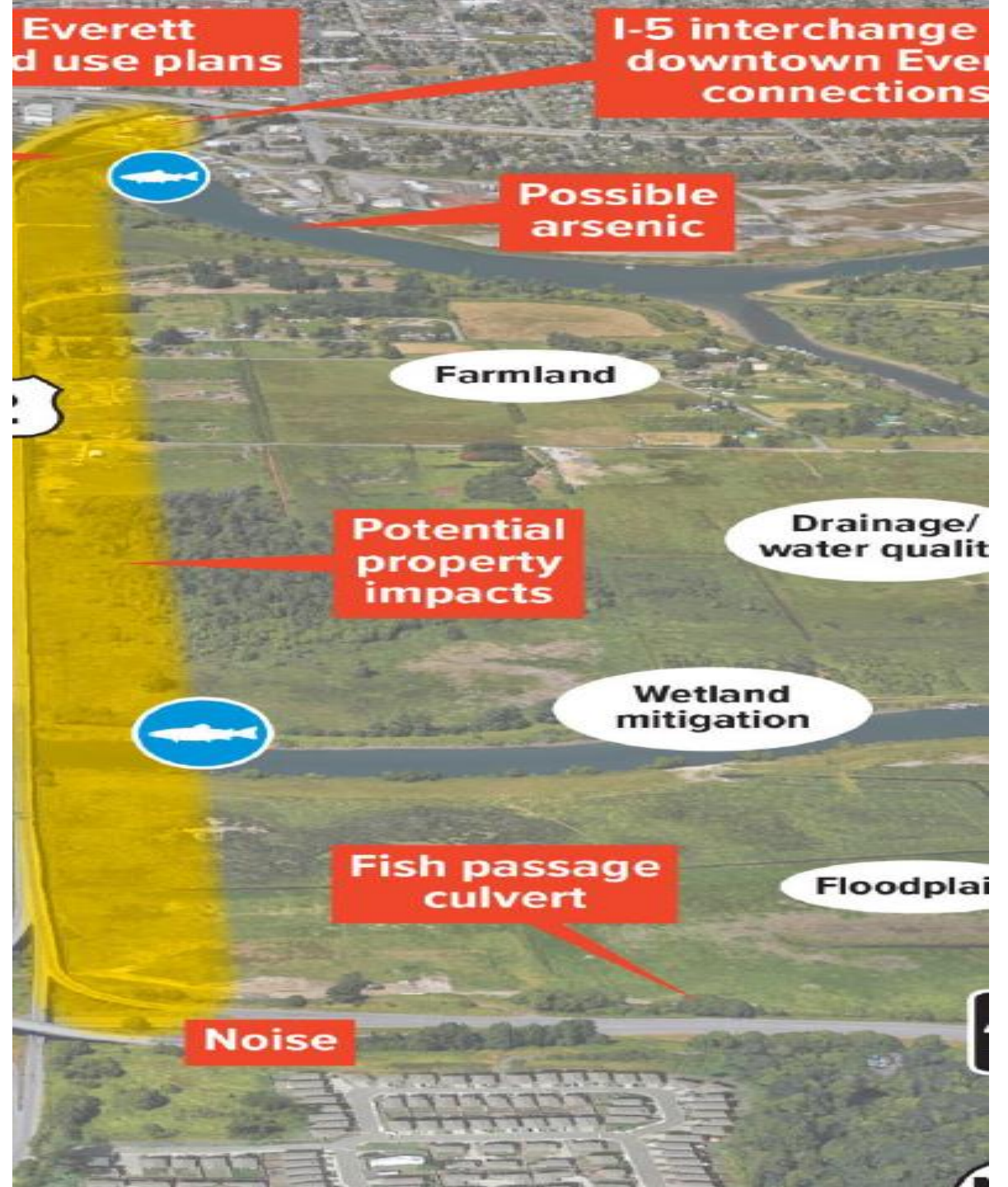
**Figure 5  
Transit Emphasis Corridors**



All maps, data, and information for this plan are for illustrative purposes only and are not to be used for official decisions. It is the responsibility of the user to verify the accuracy of the information and to consult with the appropriate agencies for more detailed information. The information is provided as a general guide and should not be used for legal or financial purposes. The information is provided as a general guide and should not be used for legal or financial purposes. The information is provided as a general guide and should not be used for legal or financial purposes.

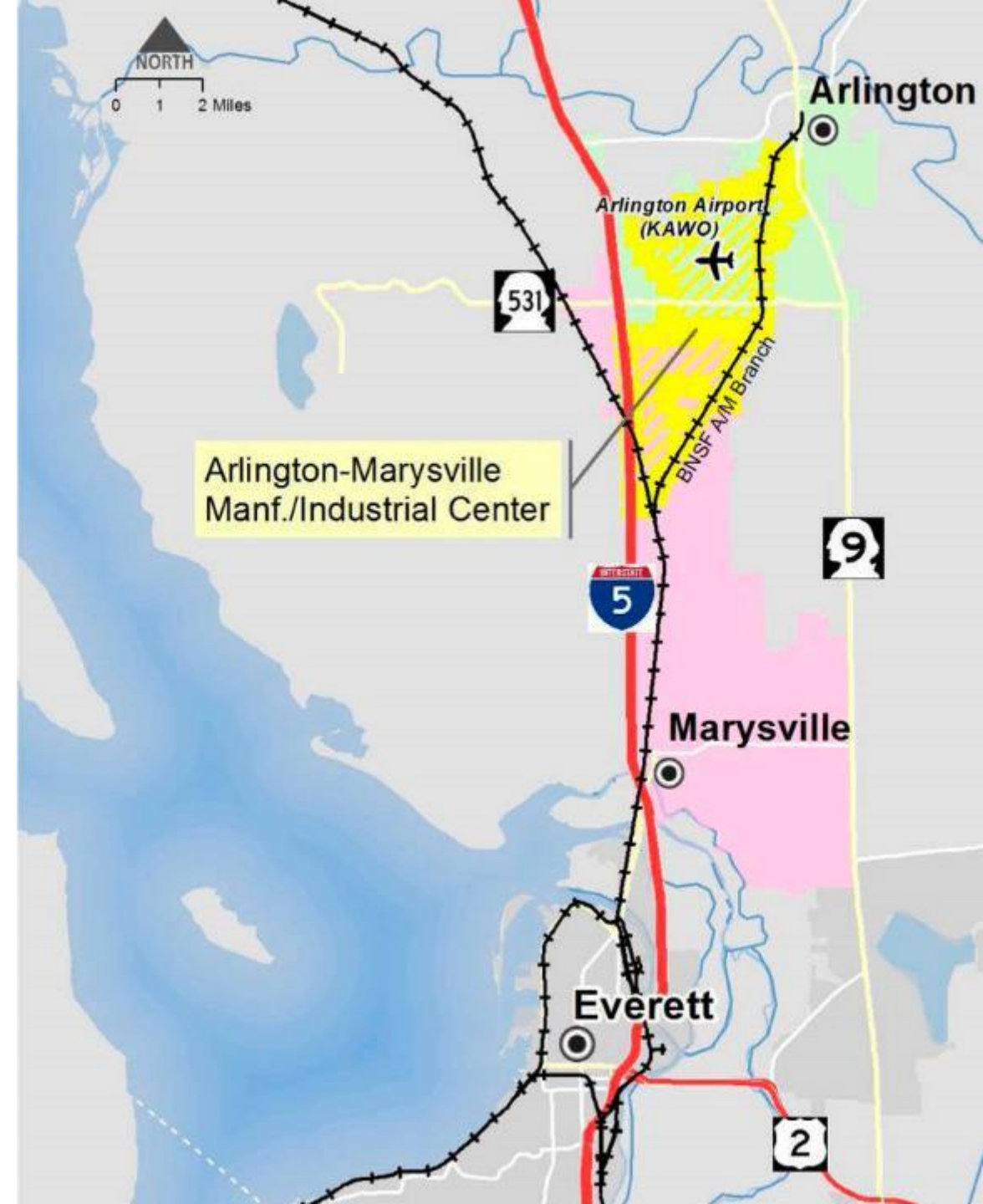


# US 2 Westbound Trestle Replacement



# Arlington/ Marysville MIC

- 25,000 jobs





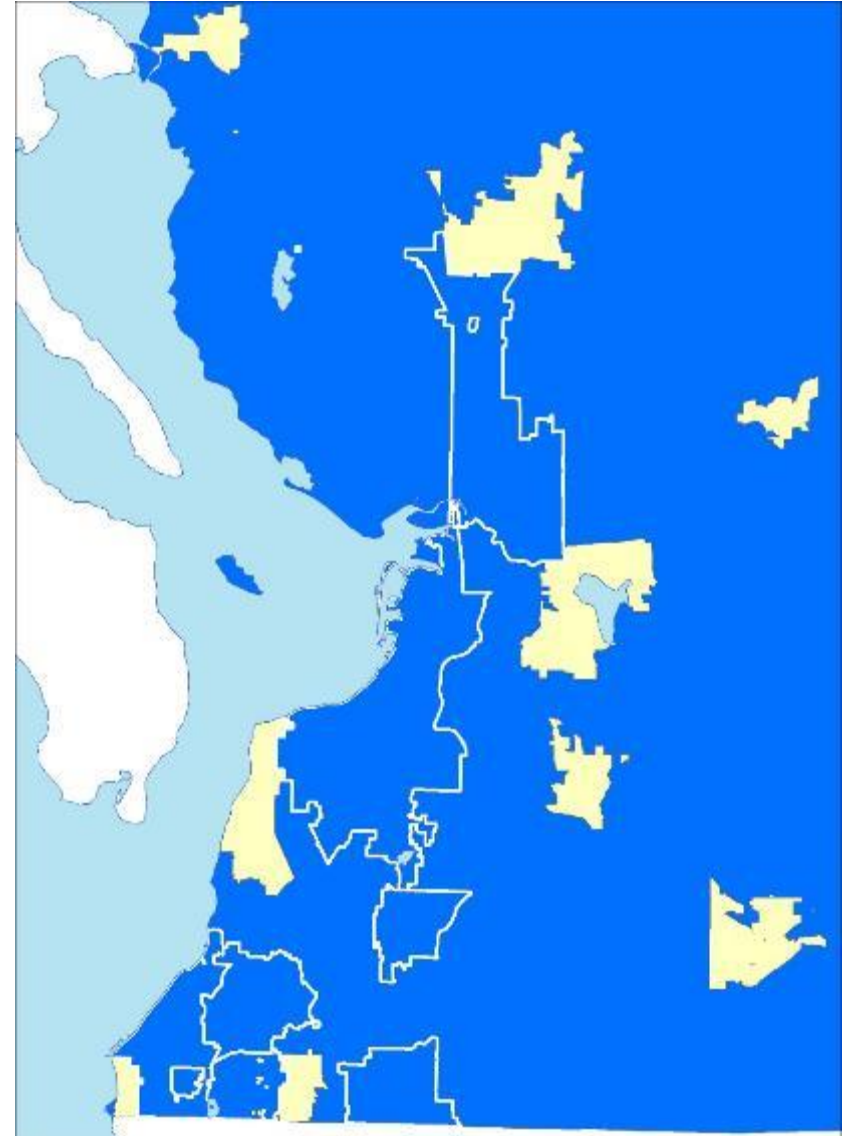
# Marysville Civic Campus

- New City Hall, Police & Municipal Court and Jail encompassing +100,000 square feet



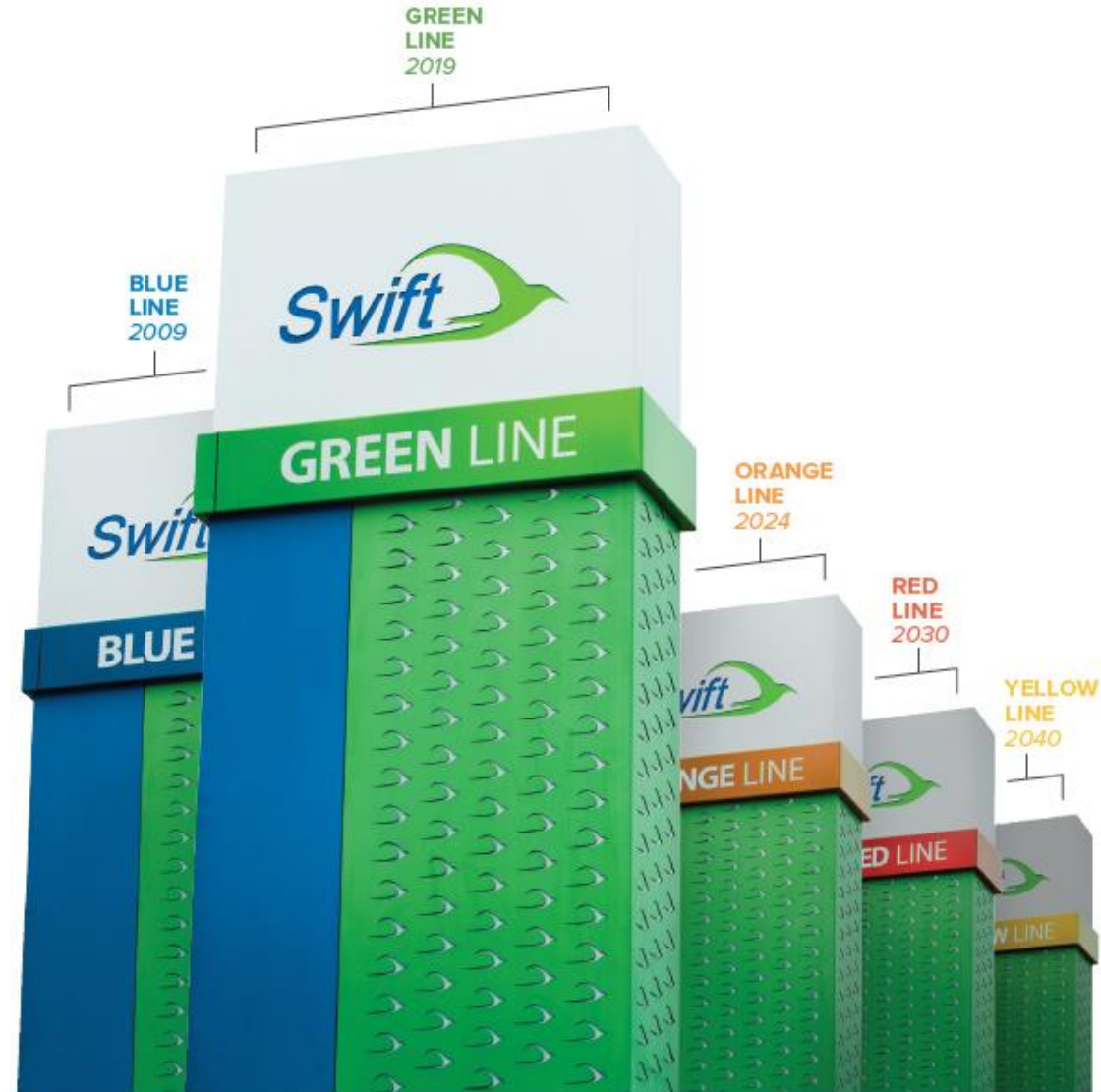
# Their plans call for Swift BRT:

- Bothell
- Edmonds
- Everett
- Lynnwood
- Marysville
- Mill Creek
- Mountlake Terrace
- Snohomish County





# Swift Network and Future Plans



# Swift Design Principles

In general, *Swift* BRT service attempts to adhere to these design principles to facilitate fast, frequent and reliable service:



Ten-second dwell times



Off-board fare collection



Raised platforms



Transit signal priority



Farside stops



Signalized crosswalks  
at stations



In-lane stops



Close to existing transit



Three or more lanes





# Swift Blue Line

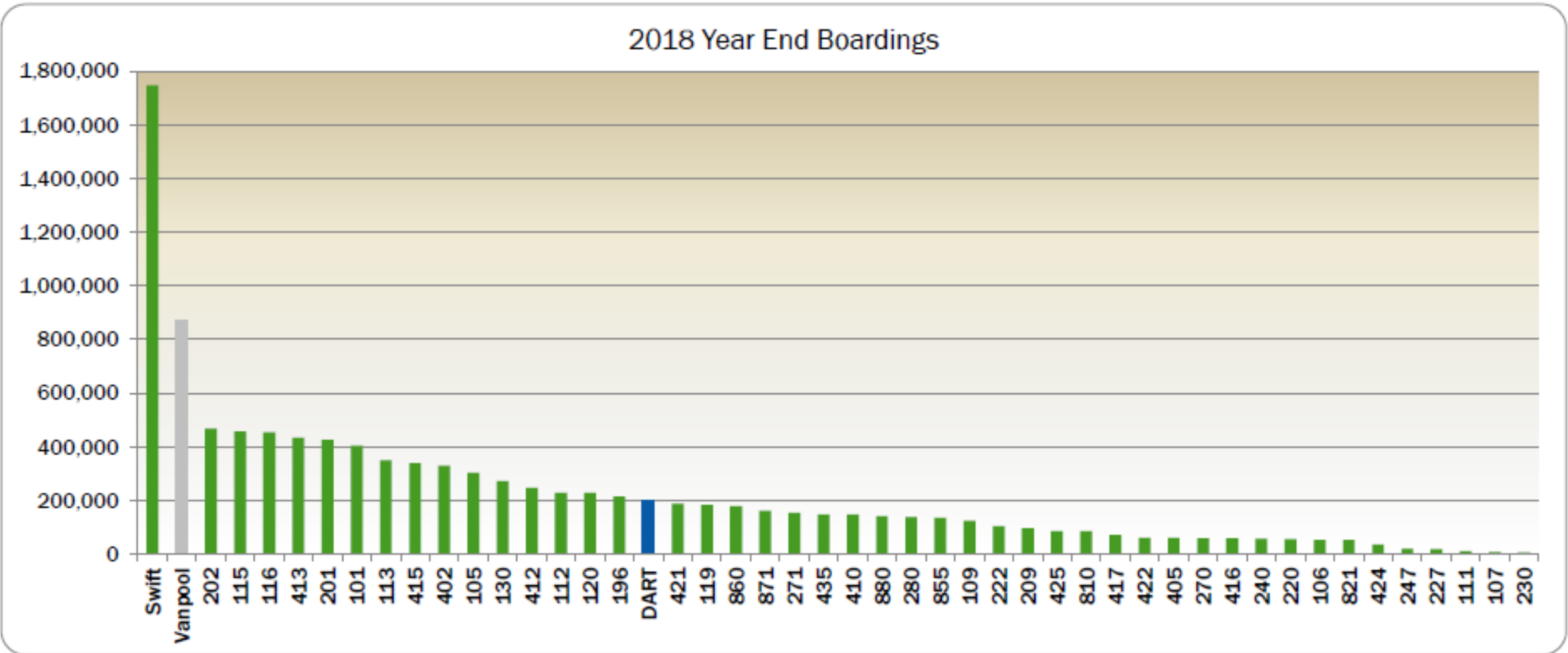
- SR 99 – Everett Station to Aurora Village Transit Center
- Opened November 2009
- “Overlay” BRT
- 16.7 miles
  - 15 station pairs
  - 10 minute service



# System Ridership

Swift ridership is more than quadruple the next closest route

- 1 in 6 Community Transit boardings are on Swift





# Swift Green Line



## Swift BLUE LINE

AURORA VILLAGE TRANSIT CENTER - EVERETT STATION  
*In service since 2009*



## Swift GREEN LINE

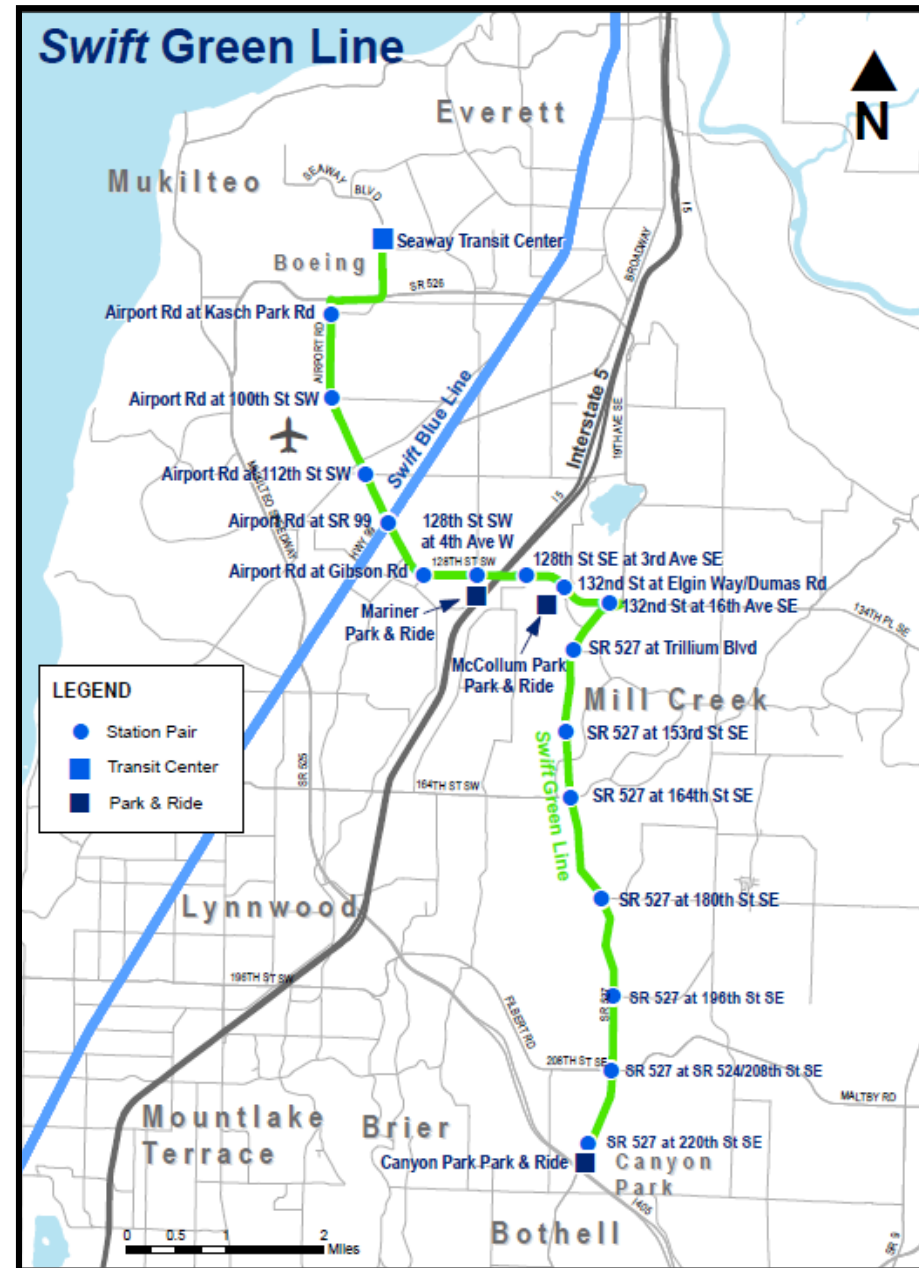
CANYON PARK - BOEING/PAINE FIELD  
*Coming in 2019*

Color Us



# Swift Green Line

- Boeing/Paine Field MIC to Canyon Park Park & Ride
- 12.5 miles
- 15 station pairs





# Swift Green Line

- ◆ Final Project cost estimate is \$73,632,000
- ◆ Service Opened March 24, 2019



# Swift Performance Report



## April 2019

- **44,212** Swift Green boardings.
- Swift Green accounted for **22%** of all BRT Boardings.
- The most utilized stations were (% of weekday boardings):

Canyon Park P&R	<b>20%</b>
Highway 99 (Pair)	<b>18%</b>
Seaway Transit Center	<b>16%</b>
4th Ave W (Pair)	<b>11%</b>
- The corridor with Routes 105, 106 and Swift Green **doubled** in daily ridership after Swift Green Launched.
- **47%** of all Swift Green boardings were associated with ORCA Taps and Tickets.



# Swift Green Line

- Average daily ridership

## Average Daily Ridership

# of Days in Calculations: 27

Swift Green

Select a Swift Line

Weekday

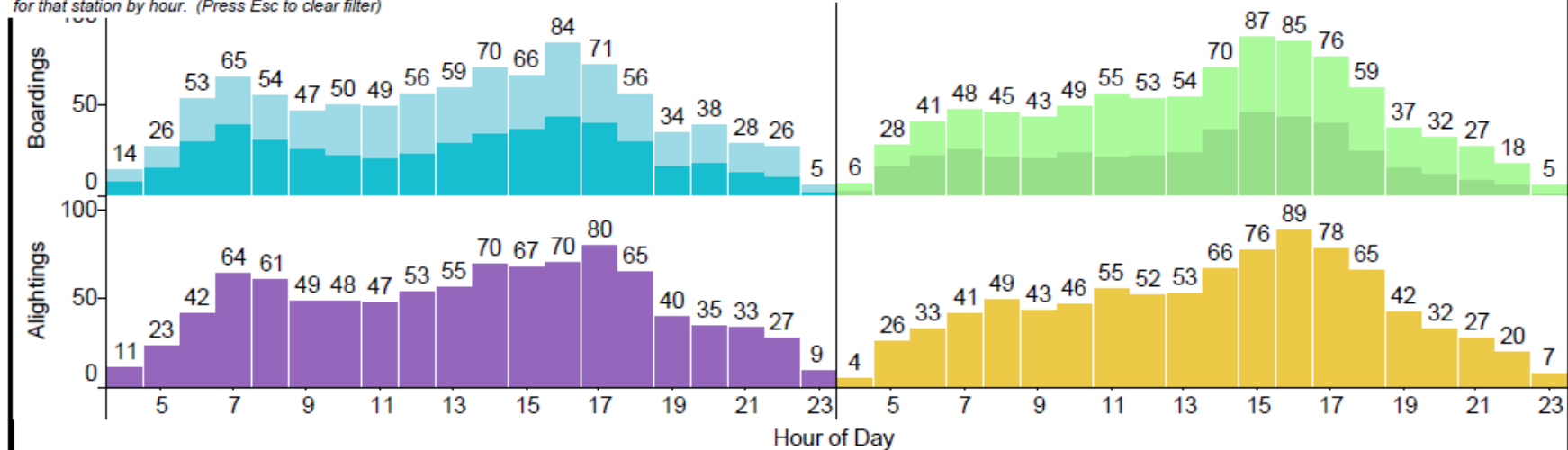
Select a Day Type



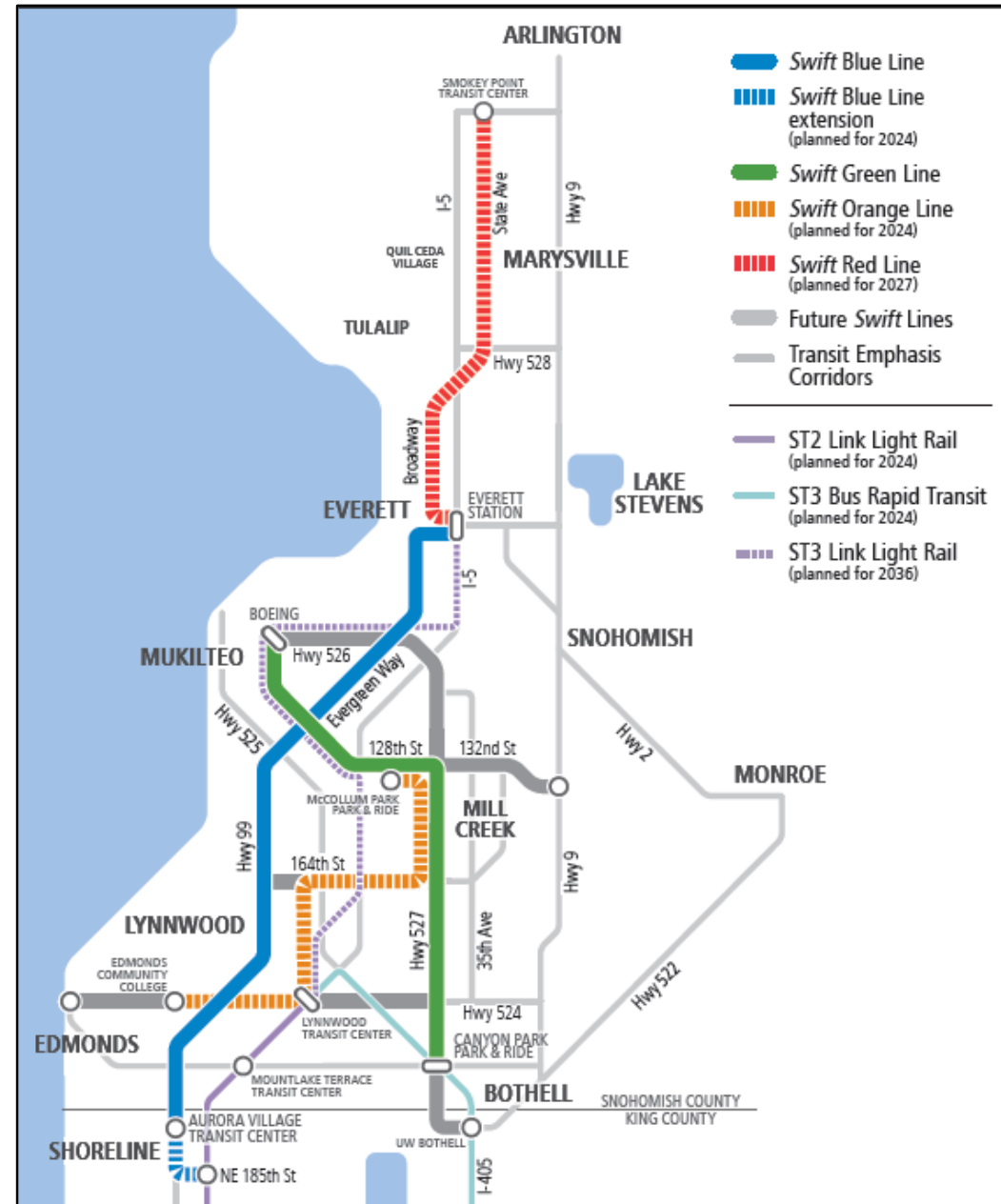
## Ridership By Hour

Select station (above) to see ridership activity for that station by hour. (Press Esc to clear filter)

35 Stations



# Future of Swift





# Swift Orange Line

- 10.5 miles
  - 16 vehicles
  - 26 station kits
  - 2 terminals
  - Priority treatments for speed & reliability
- Feasibility Study complete August 2018
- FTA approved Project Development phase
- Construction 2022/2023
- Opening by 2024 to support Link Light Rail Grand Opening



# Swift Orange Line

## RIDERSHIP



**5,300**

**daily riders**

projected for 2040

## TRAVEL TIME



**27% ↓**

**transit travel time**

between EdCC and McCollum

## COST



**\$73-\$83**

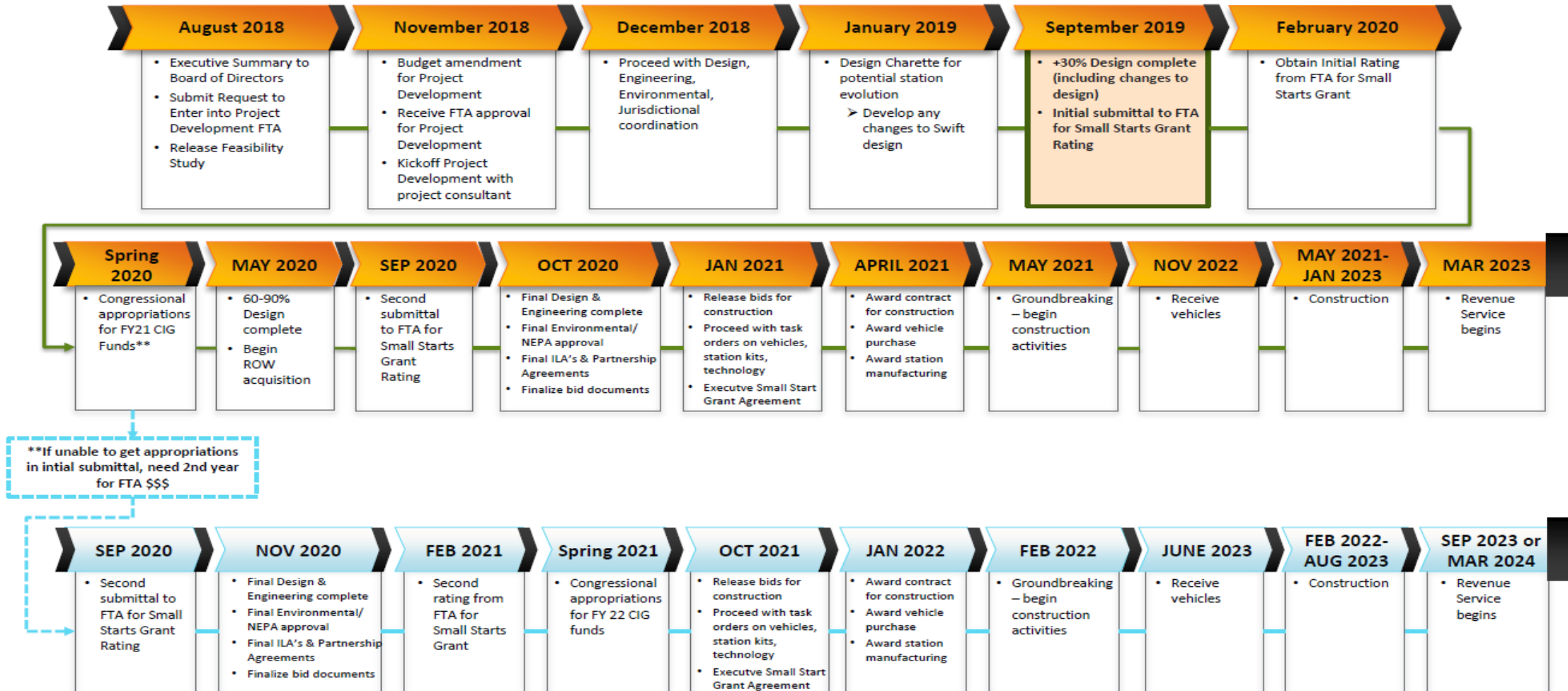
**total project cost**

(in millions)



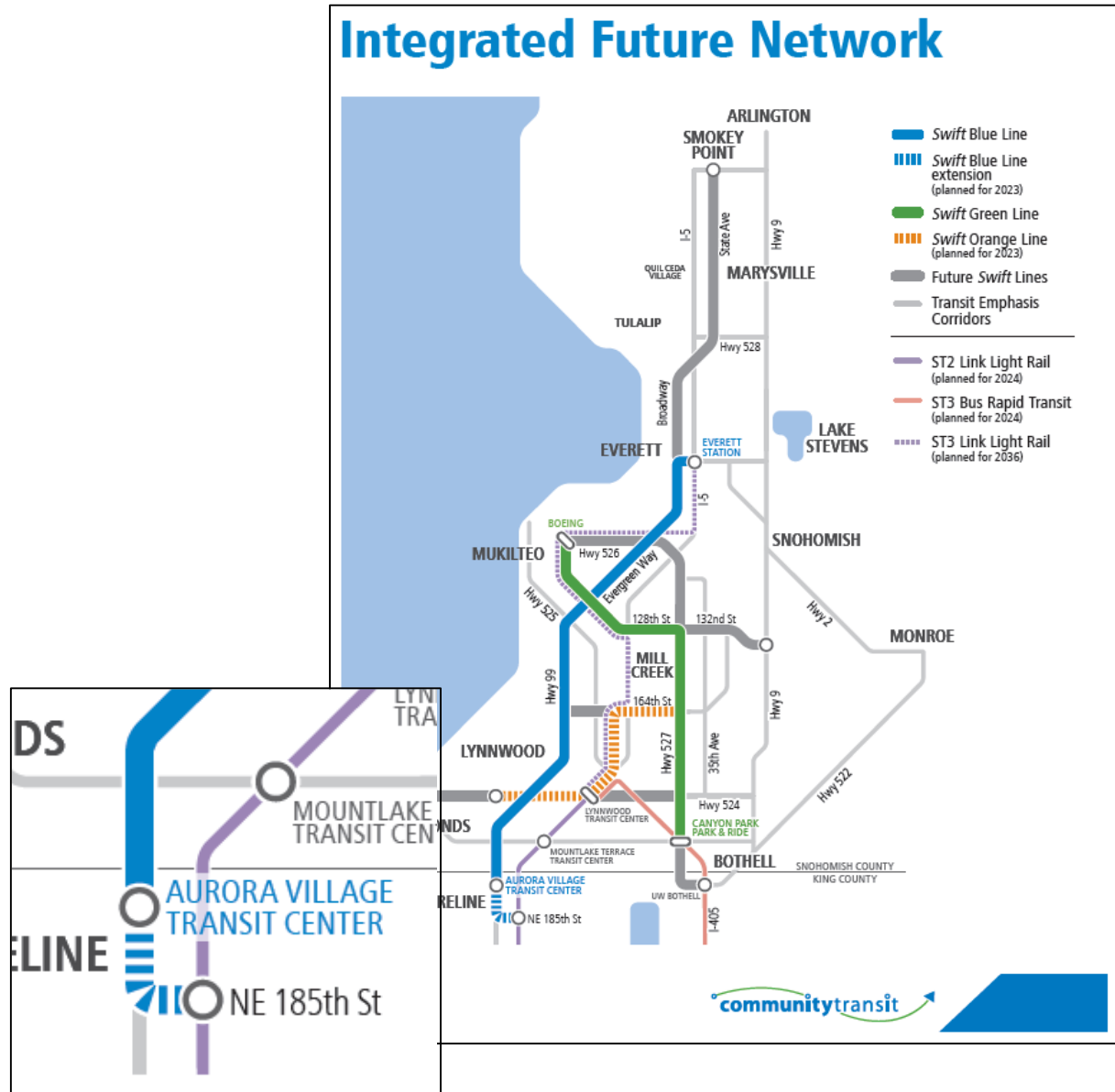
# Swift Orange Line

## Swift Orange Line Timeline *DRAFT*



# Swift Blue Line Extension

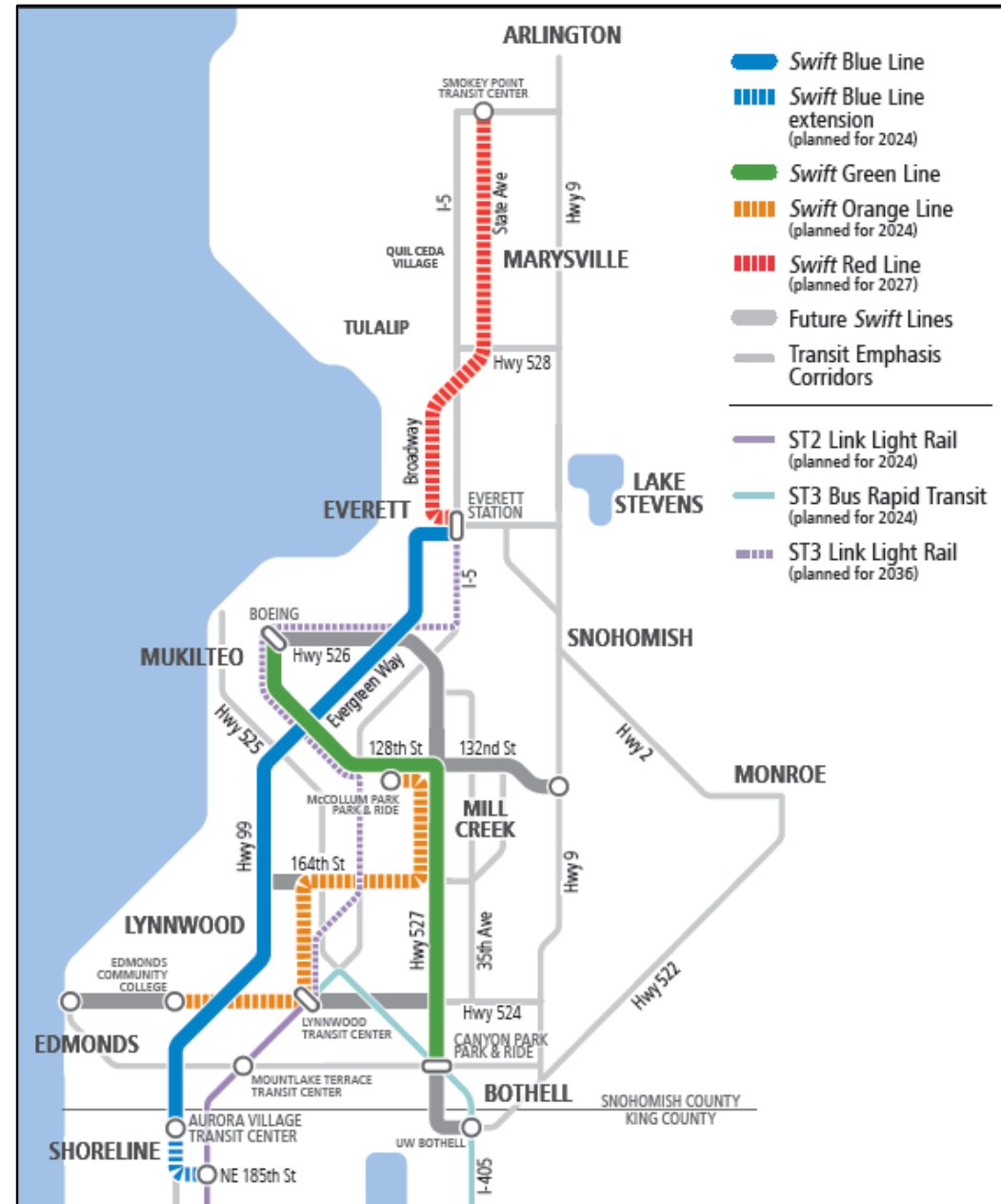
- Extend Swift Blue Line to 185<sup>th</sup> Street Station in Shoreline to support Link Light Rail
- Feasibility Study to begin Summer 2019
- Opening in 2024





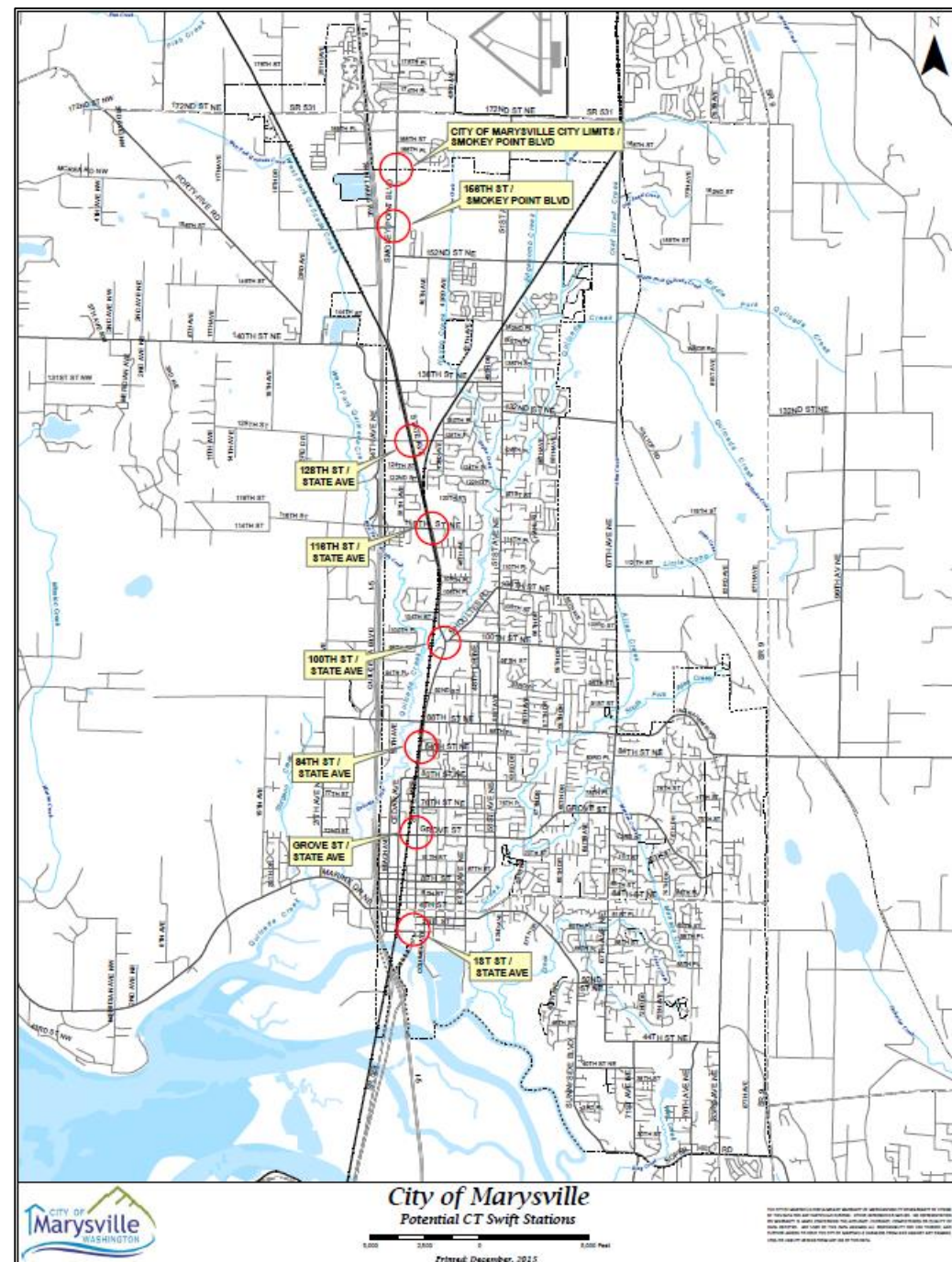
# Future of *Swift*

- Green Line Extension
- Swift Red Line



# Swift Red Line

- **Feasibility Study in 2021/2022**
- **Design/Engineering 2023/2024**
- **Construction 2025/2026**
- **2027 Service Start**





# *Swift*

